

# EXPLOSION PROOF VACUUM DS1-EX

## Installation, Operation, Maintenance & Service

Model No.

Serial No.

Filter No.

Start-Up Date:



Revision: E  
Date: 06/22/2009

1



Ruwac Industrial Vacuums  
54 Winter Street  
Holyoke, MA 01040

Tel: (413) 532-4030  
Fax: (413) 532-4039  
[www.ruwac.com](http://www.ruwac.com)

ISO 9001  
REGISTERED



# CONTENTS

---

WARRANTY	2
SAFETY INSTRUCTIONS	3
START-UP	4
INSPECTION & MAINTENANCE	5
TROUBLESHOOTING	9
PARTS	10
TERMS & CONDITIONS	30

## WARRANTY

---

1. RUWAC warrants that new equipment which are complete units and are sold and/or manufactured by RUWAC, Inc. will be free from defects in material and workmanship for a period of 18 months from date of shipment or 12 months from date of start-up, whichever come first. RUWAC warrants that replacement parts sold hereunder will be free from defects in material or workmanship for a period of 120-days after the date of shipment. RUWAC machines that have been completely re-built at the factory will carry a 180-day warranty from date of shipment. All field repairs preformed by authorized RUWAC service personnel are covered by a 120-day parts only warranty.

2. RUWAC, Inc. will not assume any responsibility under the terms of this limited warranty on equipment, which has not been paid in full. This warranty does not apply to any equipment that has been disassembled, repaired, or otherwise altered by any person without the written authorization of RUWAC'S service department, nor does it apply to any product that has been subjected to failure sure to corrosive or abrasive attack, misused, damaged, or improperly installed, nor does it apply to motors, controls, and components not manufactured by RUWAC, Inc. Motors, controls, and other Sub vendor's components therefor are warranted only to the extent of the manufacture's warranty. All warranty work on such products must be authorized by RUWAC, Inc. and must be performed in an authorized shop as designated by the manufacturer. RUWAC sole liability and buyer's sole and exclusive remedy hereunder is the replacement or repair at RUWAC'S option of products not complying with this warranty. Such repair or replacement shall be F.O.B. RUWAC'S factory, and RUWAC reserves the right to invoice all expenses incurred when repairs are made in the field at the request of the customer, except as specifically set forth herein, RUWAC makes no warranty express or implied, with respect to the products and/or service supplied hereunder, this warranty is in lieu of and excludes all other warranties, including without limitation, any warranty of merchantability, fitness for a particular purpose, or conformance to purchaser's specifications.



# SAFETY INSTRUCTIONS

## IMPORTANT SAFETY INSTRUCTIONS

### READ ALL INSTRUCTIONS BEFORE USING THIS VACUUM

The Ruwac DS1-Ex is designed for use in hazardous (classified) locations rated: Class I, Group D, Class II, Groups F&G, T3B, 165 C, ambient 40 C.

**WARNING** - To reduce the risk of fire, electric shock or injury:

1. Make sure that this vacuum is connected to the proper voltage, phase and frequency as stated on the equipment label.
2. Use only for the pickup of dry settled material. Do not use for the pickup of liquids.
3. Do not pick up ignition sources such as smoldering cigarettes, matches or hot ashes.
4. Insure that the ignition temperature of the material being vacuumed is below that of the operating temperature of the motor.
5. Pay special attention to the reactive properties of the material being vacuumed. Insure that the material is not reactive with other materials present in the machine or its materials of construction. Check your MSDS carefully for special hazards ie. Impact sensitivity.
6. Do not operate this vacuum with missing or damaged filters.
7. Inspect the vacuum for visible damage, especially to the power cord and cord cap. The vacuum must be removed from service and repaired prior to use.
8. Use only Ruwac replacement parts, accessories and hoses specifically designed for your machine.
9. Unplug the vacuum from the power source when not being used or when being serviced.
10. This vacuum is not supplied with a cord cap. The cord cap must be selected and installed by a qualified electrical technician. Insure that it is rated for the location, voltage, amperage and phase of the vacuum. Use only twist lock style cord caps.
11. The vacuum is supplied with a 30 foot power cord. It is absolutely critical that if an extension cord is added that it has the same rating ie. SOOW as the power cord provided and is properly sized to prevent voltage drop to the vacuum.
12. Connect to grounded dedicated circuits only.
13. Do not use the power cord to move this vacuum.
14. This vacuum is not designed for outside use or use in wet applications.



# START-UP

---

1. Pull up on the dust pan lever to release the dust pan and slide out. Check that it is empty, slide back into place and step down on the lever locking the dust pan into place.

## **WARNING:**

The electrical service at the installation site must supply the voltage stamped on the machine's serial tag. Most motors have multiple voltage capabilities that may appear on the motor serial tag but do not apply to the specific machine. Operating at an incorrect voltage may damage the machine. The machine should be connected to a dedicated fused service and properly grounded.

## **WARNING:**

A qualified electrician in accordance to the NATIONAL ELECTRIC CODE and all local codes should perform all wiring and or electrical adjustments during installation and servicing.

2. Install the proper cord cap on the power cable, following the manufacturer's instructions. Insure that all terminal screws are properly tightened.
3. Start the machine by turning the selector to the ON position noting the motor direction. If the motor is turning in the wrong direction, shut the machine off by turning the selector to the OFF position. Have your electrician rewire the cord cap to correct the motor rotation.

## **WARNING:**

When using the vacuum in another location, always verify motor rotation before placing the vacuum into service.



# INSPECTION & MAINTENANCE

---

## WARNING:

Always wear a dust mask when performing filter inspections or service.

## Standard Filter Inspection

1. Shut off machine and disconnect from power source.
2. Move the vacuum to a non-hazardous, well ventilated area.
3. Pull up on the foot lever to release the dust pan and empty if needed.
4. Using a mirror and flash light inspect the filter from the area where the dust pan was removed.
5. Remove any material between the pleats by hand. Always wear proper safety equipment when handling hazardous materials.
6. Inspect the filter pleats for any damage.

## WARNING:

Care should be exercised when cleaning the filter. Make sure that you are familiar with the material present in the vacuum and any handling or exposure warnings for that material. Consult the MSDS for this information.

## Standard Filter Replacement

## WARNING:

The motor deck assemble is heavy, follow safe lifting procedures.

1. Turn the machine off and disconnect from power source.
2. Follow the preceding filter inspection procedure to determine if removal is necessary.
3. Remove all of the housing component socket truss screws with a 5/32" hex-wrench.
4. Remove the silencer assembly.
5. Remove the motor deck and disconnect any ground wires.
6. Disconnect the clear differential pressure gauge tubes from the respective barbed fittings if so equipped.
7. Remove the HEPA filter housing spacer and HEPA adapter assembly if so equipped.
8. Remove filter housing spacer assembly.
9. Turn the filter housing assembly over on a flat work surface then carefully work the filter off the filter shaker insert.



# INSPECTION & MAINTENANCE

---

10. Remove and save the black filter mesh pads for use in the new filter.

## WARNING:

The removed filter must be disposed of in accordance with the MSDS instructions for the material present in the filter. Some materials require special disposal. Consult your Safety engineer for specific disposal instructions.

11. Install the new filter into the filter shaker insert by taking special not to damage the filter material while sliding the filter over the inserts.
12. Seat the filter housing spacer assembly on the base oriented as removed.
13. Reinstall the housing components making sure they are properly seated and that all ground wires and differential pressure tubes are securely reconnected.
14. Reinstall the motor deck, ground wire and silencer assembly.
15. Using the 5/32" hex wrench, align the housing spacer mounting holes by inserting the wrench into the holes to see if they align. Shift the housing components if needed.
16. Reconnect the power cable to a power source and turn the vacuum on.
17. Cover the inlet with a piece of wood or cardboard to compress the housing spacers and reinstall the mounting screws, being careful not to cross thread the screws.

## HEPA Filter Removal and Installation

1. Turn off the vacuum and disconnect from the power source.
2. Move the vacuum to a non-hazardous well ventilated location.
3. Remove the silencer assembly and the motor deck.
4. Remove the hold down brackets for the HEPA filter.
5. Remove the HEPA filter and dispose of as directed in the filter disposal warning listed for the standard filters.
6. Install the replacement HEPA filter with the gasket facing down, centering the filter on the mounting plate.
7. Instal the hold down brackets and tighten the mounting screws so that the filter is evenly seated.
8. Reinstall the motor deck and silencer assembly. Make sure that all grounding wires are reconnected.
9. Align the mounting holes using the tip of the 5/32" hex wrench.
10. Connect the power cord to the power source and turn the vacuum on.
11. Cover the inlet with a flat piece of wood or cardboard to compress the housing gaskets and reinstall the mounting screws being careful not to cross thread the screws.



# INSPECTION & MAINTENANCE

## Turbine, Motor and Belt Replacement

**NOTE:** The Turbine is not field serviceable and must be replaced as one unit if defective. Replacement of the motor belt or turbine will require the turbine seal to be replaced.

1. Switch the vacuum off and remove the power cord from the power source.
2. Remove the vacuum from the hazardous area to a service work area where the motor deck can be rested on a work bench.
3. Remove the silencer assembly and the motor deck, placing the motor deck on a level work surface.
4. Using a sharp edge, remove the silicone seal from the turbine.
5. Loosen or remove the mounting nuts for the turbine if the motor or belt need to be replaced.
6. By sliding the turbine toward the motor the belt or motor or turbine can be removed.
7. The mounting nuts of the turbine will need to be removed to replace the turbine.

## Belt Installation and Alignment

1. Complete the previous operations to prepare the motor deck for service of the motor, turbine or belt.
2. Replace the defective component.
3. Secure the motor with the bolts provided.
4. Reconnect the ground wire.
5. Match the height of the first groove of the turbine sheave to the first groove of the motor sheave to insure belt alignment. The motor sheave can be adjusted by sliding the shaft bushing up.
6. Using a torque wrench, tighten the locking bolts to 15 pounds.
7. Install the belt and tension to provide 1/2" deflection in the center of the belt.
8. Hand spin the motor sheave to insure proper alignment, verify by taking a second height measurement to the first groove.
9. Install the ground wire on the turbine and snug up the turbine nuts. Do not over tighten, turbine studs are hardened.
10. Apply a bead of silicone around the turbine and smooth bead.
11. Let silicone seal cure before assembly.
12. Connect the vacuum to the power source and switch on.
13. Cover the inlet with a flat piece of wood or cardboard and install and tighten all housing assembly screws.

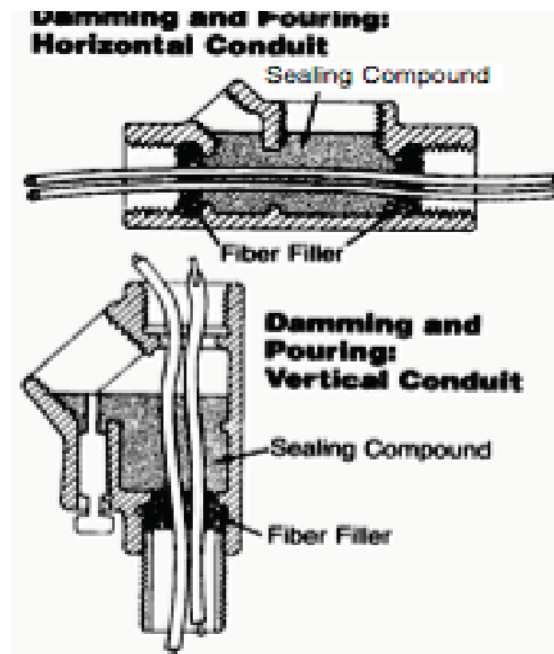


# INSPECTION & MAINTENANCE

## Power Cord and Seal Replacement

**WARNING:** The power cord should be replaced if upon inspection, the insulation shows any deterioration or visible damage that has penetrated the insulation and exposed the individual wires. It must be replaced with a 12 gauge SO series cable rated for the appropriate phase.

1. Switch the vacuum off and disconnect from the power supply.
2. Disconnect the cord wires from the motor starter and ground connection
3. Remove the strain relief and the cover of the cable sealing fitting.
4. Using a screw driver remove the potting material seal.
5. Reinstall the strain relief and measure the amount of wire needed and where the insulation comes to the beginning of the opening of the potting chamber.
6. Use the Appleton # ACK6F-A kit which includes the fiber material and cement.
7. Use the fiber material to form a dam so the cement will stay in the chamber until it hardens. Also, make sure that the wires are separated to allow the cement to fill in between them.
8. Mix and fill the cement into the opening to a level just below the opening of the access plug.
9. Connect the power cord wires to the starter and ground terminal.
10. Insure that the cement has cured and that the seal is present around all wires.
11. Install the access plug and securely tighten.
12. Re-install the control box cover and secure all bolts.
13. Tighten the strain relief nut so that the cable is secure.

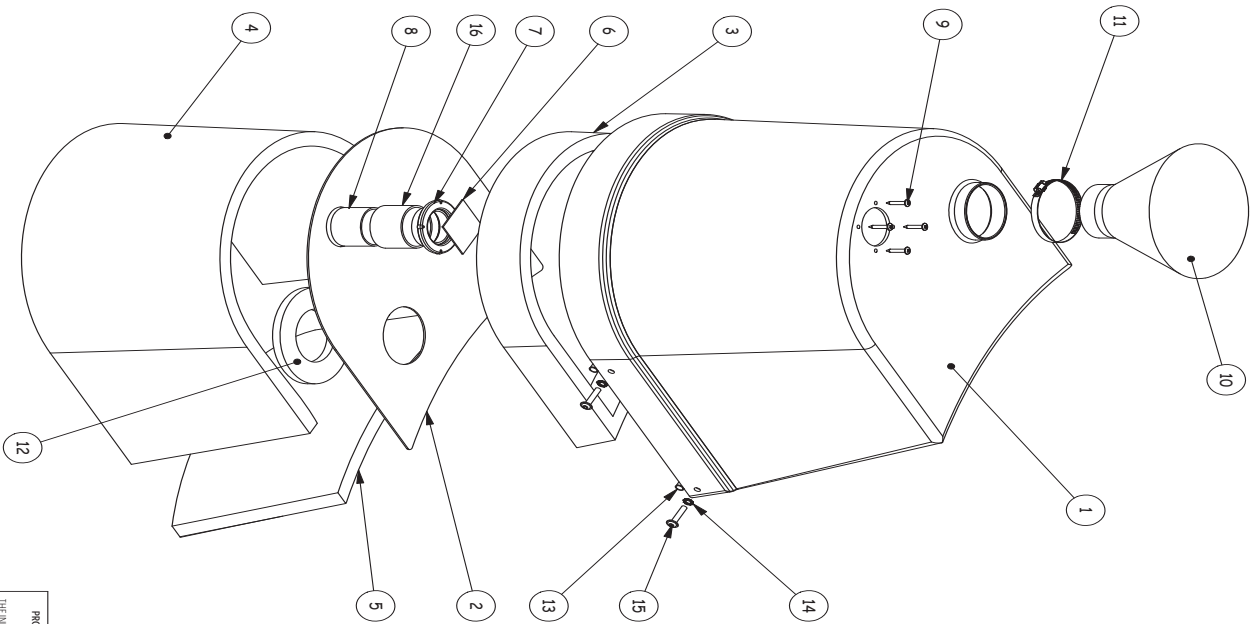




# TROUBLESHOOTING

PROBLEM	POSSIBLE CAUSE	CORRECTIVE ACTION
Insufficient Vacuum Pressure	- Dustpan improperly seated	- Remove dustpan, inspect seal, replace dustpan.
	- Filter clogged or improperly seated	- Follow filter inspection procedure, section IV.
	- Clogged hose	- Remove hose and re-inspect vacuum pressure, if vacuum pressure returns to normal, snake hose.
	- Unit is improperly sealed	- Block the inlet with a flat and rigid material to place the unit under vacuum pressure then inspect for air leaks.
Air Leaks	- Worn or poorly seated seals, fasteners improperly installed	- Block the inlet with a flat and rigid material to place the unit under vacuum pressure then remove fasteners and turn the unit off. Inspect all seals for completeness, then reseal secure components, again under vacuum pressure.
Material In Exhaust; On Top Side of Filter	- Poor filter seal or torn filter	- Follow filter inspection procedure in previous pages.
Unusual or High Pitched Noises	- Motor bearing, turbine bearing	- Follow belt/turbine/motor inspection procedure in previous pages. Check motor and turbine bearing for noise by hand.
	- Worn or poorly seated seals, Fasteners improperly installed	- Block the inlet with a flat and rigid material to place the unit under vacuum pressure then remove fasteners and turn the unit off. Inspect the seals for damage, then reseal and secure components again under vacuum pressure.
	- Belt worn, cracked, damaged, stretched, loose	- Follow belt/turbine/motor inspection procedure in previous pages.

# PARTS



REVISIONS			
REV.	DESCRIPTION	DATE	NAME
E	E.C.O. #603	10/24/08 D.J.S.	
F	E.C.O. # 616	12/2/08 D.J.S.	

ITEM NO.	PART NUMBER	DESCRIPTION	QTY.
1	34976	Silencer Hood, Black, D1	1
2	32853	Diffuser Lid Plate, D1	1
3	32862	Silencer Foam, Diffuser Lid, D1	1
4	32862	Silencer Foam, Diffuser Lid, D1	1
5	32862	Silencer Foam, Diffuser Lid, D1	1
6	8022	Mesh Diffuser, Green	1
7	CY701229	2in Flange Adapter, PVC	1
8	CY701403	2in PVC Tube, Cut to 15in Long	1
9	32988	#8-1 Phillips Truss Head, Zinc	4
10	30058	Red Diffuser Bag, D1	1
11	4019	Hose Clamp, 1-1/8" - 3" SS	1
12	2509812	Neoprene Sponge Gasket	1
13	34817A	M6 Blind Pen	4
14	25000	1/4" External Star Washer	4
15	21464	M6x30 Allen Head Screw	4
16	CY701486	Slip Connector, 2in, PVC	1

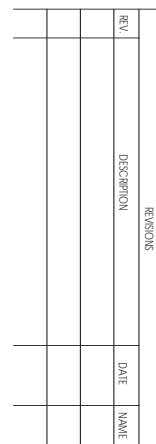
UNLESS OTHERWISE SPECIFIED:			
DIMENSIONS ARE IN INCHES	DATE	NAME	
TOLERANCES	4/15/03	D.J.S.	
FRACTIONAL ± 1/16"			
ANGULAR MATCH ± 30°	CHECKED		
TWO PLACE DECIMAL ± .05	ENG APPR.		
THREE PLACE DECIMAL ± .010	MFG APPR.		
	QA		
	COMMENTS		
	BREAK SHARP EDGES		
	MATERIAL	--	
	FINISH	--	
	USED ON		
	APPLICATION		

PROPRIETARY AND CONFIDENTIAL  
THE INFORMATION CONTAINED HEREIN IS THE PROPERTY OF RUWAC. ANY REPRODUCTION IN PART OR AS A WHOLE WITHOUT THE WRITTEN PERMISSION OF RUWAC IS PROHIBITED.

SIZE DWG. NO. REV  
B 000 E 0128 US F  
SCALE: 1:5.5 WEIGHT: SHEET 1 OF 1

TITLE:  
**DIFFUSER ASSEMBLY**  
BLACK

54 WINTER ST.  
Holyoke, Ma. 01040



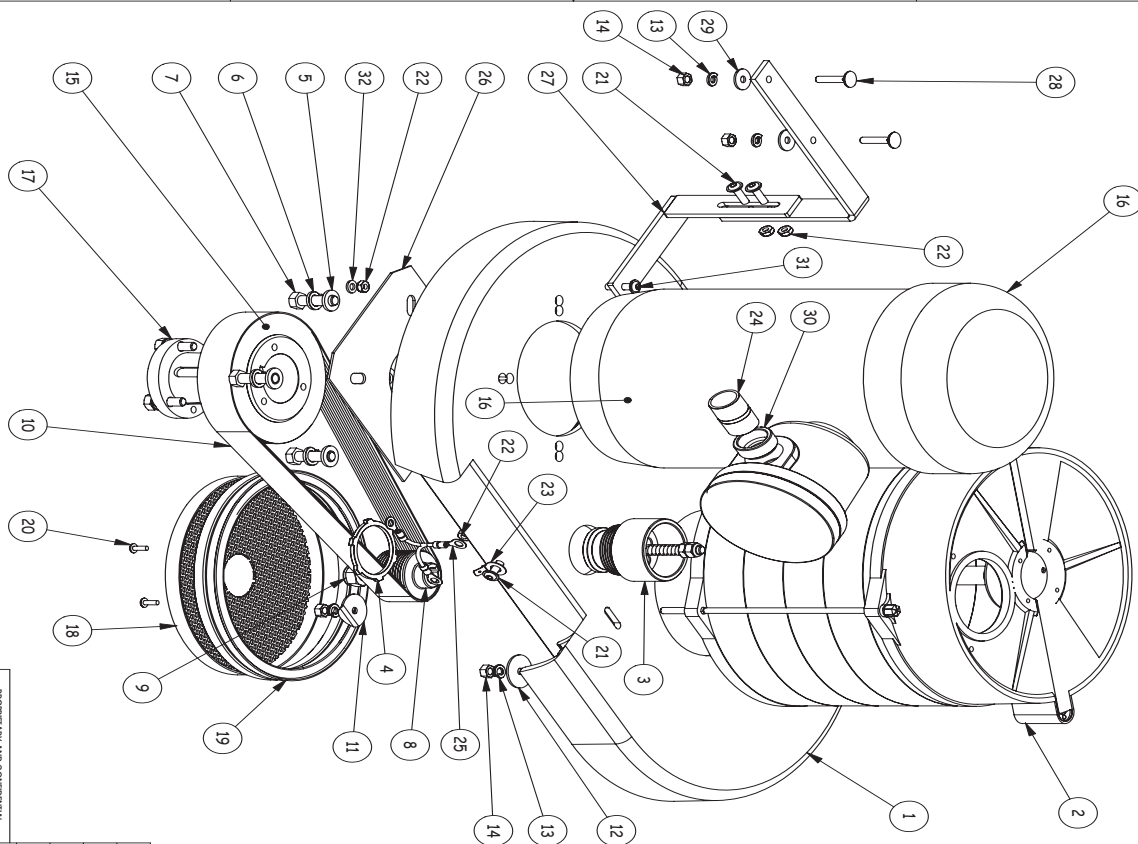
**54 Winter St.**  
**Holyoke, Ma. 01040**

---

**54 Winter St.**  
**Holyoke, Ma. 01040**

SIZE	DWG. NO.	REV
<b>B</b>	000 E 0228 US	

REVISIONS			
REV.	DESCRIPTION	DATE	NAME



ITEM NO.	PART NUMBER	DESCRIPTION	QTY.
1	32838	Motor Deck, DS1, Black	1
2	22220	Turbine, NTB 55/6.5/48, 2.2 KW	1
3	9696008	Relief Valve, 1.5" Adjustable	1
4	34928	Lock Nut, 1 1/2"	1
5	37507	Flat Washer, 3/8"	4
6	37501	Split Lock Washer, 3/8"	4
7	37505	3/8-16 x 1 1/4" Bolt, Hex Cap	4
8	33057	Pulley, Poly-V, 10 Groove, 48mm Dia	1
9	32827	M12 Nyloc Nut, Left Hand	1
10	35014	Belt, 330 J, 10 Groove, Poly-V	1
11	20031	Fender Washer, 1/4"x1 1/4", Zinc, Bent	2
12	20031	Fender Washer, 1/4"x1 1/4", Zinc	1
13	20039	M6 Split Lock Washer, Zinc	5
14	20040	Hex Nut, M6, Zinc	5
15	33052us	Sheave, 125mm, 10 Groove, Poly-V	1
16	25006-EX	Motor, 3hp, 230/460 Volt, 3ph, Gas-Explosion Proof	1
17	33053	Bushing, P1, 5/8", US Style	1
18	99953	Screen Protector, Turbine	1
19	31333	Gasket, Self Gripping, 11x21mm, EPDM	1
20	32869	M5x12 Button Head Screw	2
21	34817	M6x20 Allen Head Screw	3
22	34876	M6 Lock Nut, Zinc	4
23	34998	Ground Connector, Bolted for Quick Disconnect	1
24	6100010	Nipple, 3/4" NPT Close	1
25	34867	Grounding Wire, Turbine to Motor to Deck	1
26	3180600	Motor Support Plate, DS1	1
27	251602	NEMA 9 Mount Bracket, DS1-EX1000-1150-1220	1
28	34818	M6X30 Carriage Bolt	2
29	34819	M6 Fender Washer	2
30	316526	Reducing Bushing, 1" x 3/4"	1
31	3481701	M6x25 Allen Head Screw	1
32	25067	M6 Flat Washer	1

UNLESS OTHERWISE SPECIFIED:			
DIMENSIONS ARE IN INCHES	DRAWN	DATE	NAME
TOLERANCES:	4/28/09	D.J.S.	
FRACTIONAL ± 1/16"	CHECKED		
ANGULAR MATCH ± 0.01°	ENG APPR.		
TWO PLACE DECIMAL ± .05	MFG APPR.		
THREE PLACE DECIMAL ± .010	QA		

**54 Winter St.**  
**Ruwac** Holyoke, MA 01040  
**MOTOR DECK ASSEMBLY**  
**DS1-EX1220**

THE INFORMATION CONTAINED ON THIS DRAWING IS THE PROPERTY OF RUWAC. ANY REPRODUCTION IN PART OR AS A WHOLE WITHOUT THE WRITTEN PERMISSION OF RUWAC IS PROHIBITED.			
PROPRIETARY AND CONFIDENTIAL			
MATERIAL: --			
BREAK SHARP EDGES			
NEXT ASSY: USED ON: FINISH: --			
APPLICATION			

SIZE	DWG. NO.	REV
B	000 E 0229 US	
SCALE: 1/4"	WEIGHT:	SHEET 1 OF 1



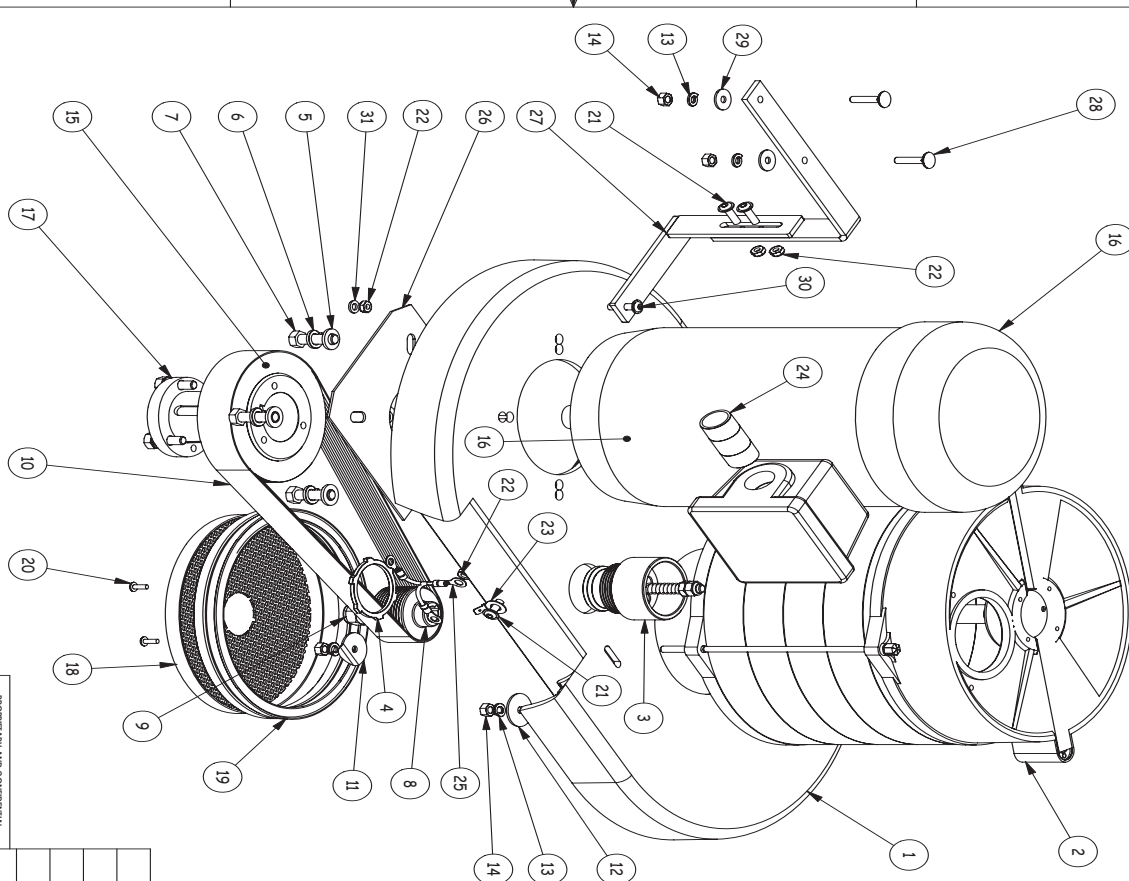
Ruwac Industrial Vacuums  
54 Winter Street  
Holyoke, MA 01040

Tel: (413) 532-4030  
Fax: (413) 532-4039  
www.ruwac.com

ISO 9001  
REGISTERED



REVISIONS			
REV.	DESCRIPTION	DATE	NAME



ITEM NO.	PART NUMBER	DESCRIPTION	QTY.
1	32838	Motor Deck, DS1, Black	1
2	22219	Turbine NTB 55/6.5/52, 1.5 KW	1
3	9696008	Relief Valve, 1.5" Adjustable	1
4	34928	Lock Nut, 1 1/2"	1
5	37507	Flat Washer, 3/8"	4
6	37501	Split Lock Washer, 3/8"	4
7	37505	3/8-16 x 1 1/4" Bolt, Hex Cap	4
8	33059	Pulley, Poly-V, 10 Groove, 52mm Diameter	1
9	32827	M12 Nyloc Nut, Left Hand	1
10	35014	Belt, 330 J, 10 Groove, Poly-V	1
11	20031	Fender Washer, 1/4" x 1 1/4", Zinc, Bent	2
12	20031	Fender Washer, 1/4" x 1 1/4", Zinc	1
13	20039	M6 Split Lock Washer, Zinc	5
14	20040	Hex Nut, M6, Zinc	5
15	33052us	Sheave, 125mm, 10 Groove, Poly-V	1
16	25004G-EX	Motor, 2hp, 230/460 Volt, 3ph, Gas-Explosion Proof	1
17	3305205US	Bushing, P1, 7/8", US Style	1
18	99953	Screen Protector, Turbine	1
19	31333	Gasket, Self Gripping, 11x21mm, EPDM	1
20	32869	M5x12 Burton Head Screw	2
21	34817	M6x20 Allen Head Screw	3
22	34876	M6 Lock Nut, Zinc	4
23	34998	Ground Connector, Bolted for Quick Disconnect	1
24	6100011	Nipple, 3/4" NPT X 2"	1
25	34867	Grounding Wire, Turbine to Motor to Deck	1
26	3180600	Motor Support Plate, DS1	1
27	251602	NEMA 9 Mount Bracket, DS1-EX1000-1150-1220	1
28	34818	M6X30 Carriage Bolt	2
29	34819	M6 Fender Washer	2
30	3481701	M6x25 Allen Head Screw	1
31	25067	M6 Flat Washer	1

UNLESS OTHERWISE SPECIFIED:			
DIMENSIONS ARE IN INCHES	DRAWN	DATE	NAME
FRACTIONS 1/16"	4/29/09	D.J.S.	
ANGULAR MATCHES 30°/45°	CHECKED		
TWO PLACE DECIMAL ± .05	ENG APPR.		
THREE PLACE DECIMAL ± .030	MFG APPR.		

BREAK SHARP EDGES			
O.A.			

MATERIAL			
NEXT ASSY			
USED ON			
FINISH			

THE INFORMATION CONTAINED IN THIS DRAWING IS THE PROPERTY OF RUWAC. ANY REPRODUCTION IN PART OR AS A WHOLE WITHOUT THE WRITTEN PERMISSION OF RUWAC IS PROHIBITED.

TITLE: 54 Winter St.  
**Ruwac** Holyoke, Ma 01040  
 MOTOR DECK ASSEMBLY  
 DS1-EX1150

SIZE	DWG. NO.	REV
B	000 E 0230 US	
SCALE: 1/4"	WEIGHT:	SHEET 1 OF 1



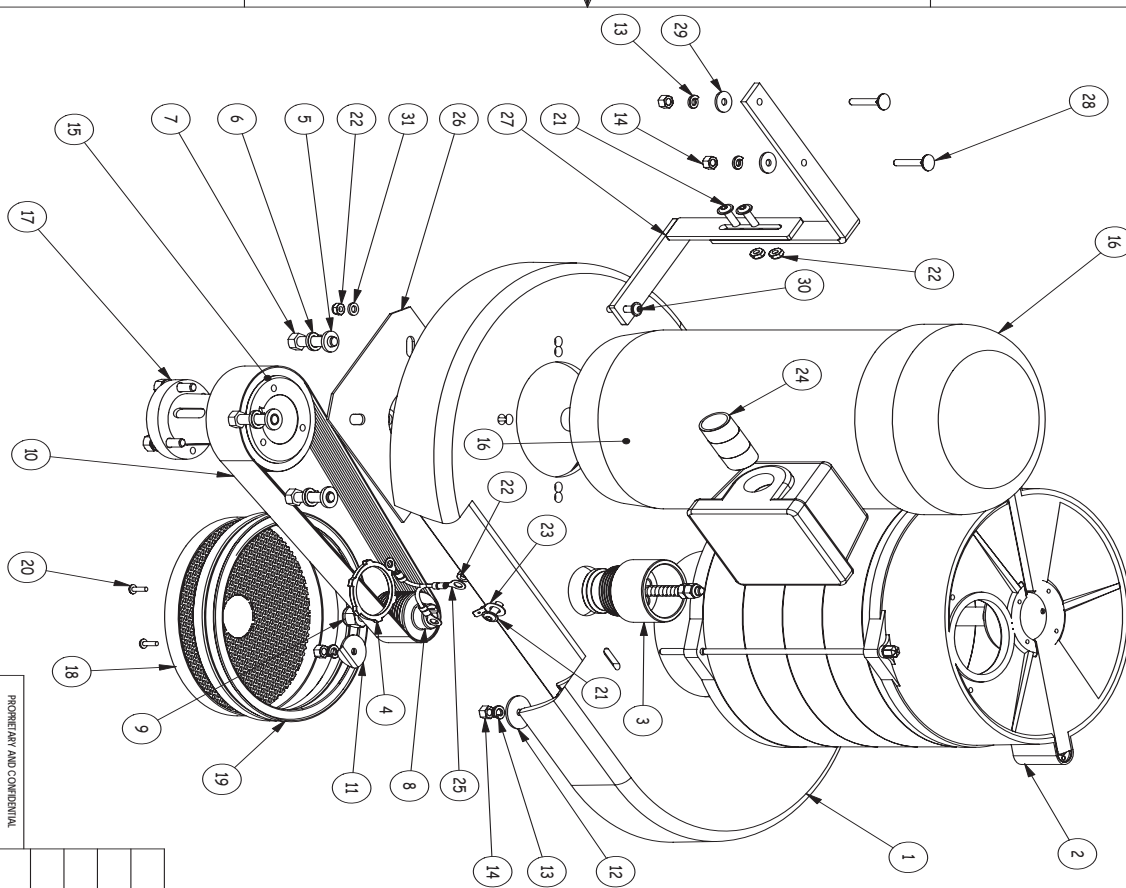
Ruwac Industrial Vacuums  
 54 Winter Street  
 Holyoke, MA 01040

Tel: (413) 532-4030  
 Fax: (413) 532-4039  
 www.ruwac.com

ISO 9001  
 REGISTERED



REVISIONS			
REV.	DESCRIPTION	DATE	NAME



ITEM NO.	PART NUMBER	DESCRIPTION	QTY.
1	32838	Motor Deck, DS1, Black	1
2	22220	Turbine, NTB 5S/6.5/48, 2.2 KW	1
3	9696008	Relief Valve, 1.5" Adjustable	1
4	34928	Lock Nut, 1 1/2"	1
5	37507	Flat Washer, 3/8"	4
6	37501	Split Lock Washer, 3/8"	4
7	37505	3/8-16 x 1 1/4" Bolt, Hex Cap	4
8	33057	Pulley, Poly-V, 10 Groove, 48mm Dia	1
9	32827	M12 Nyloc Nut, Left Handed	1
10	35013	Belt, 310 J, 10 Groove, Poly-V	1
11	20031	Fender Washer, 1/4" x 1 1/4", Zinc, Bent	2
12	20031	Fender Washer, 1/4" x 1 1/4", Zinc	1
13	20039	M6 Split Lock Washer, Zinc	5
14	20040	Hex Nut, M6, Zinc	5
15	33063	Sheave, 100mm, 10 Groove	1
16	250126-EX	Motor, 1.5hp, .115/230 Volt, 1ph, Gas-Explosion Proof	1
17	3306205US	Bushing, P1, 7/8", US Style	1
18	99953	Screen Protector, Turbine	1
19	31333	Gasket, Self Gripping, 11x21mm, EPDM	1
20	32869	M5x12 Button Head Screw	2
21	34817	M6x20 Allen Head Screw	3
22	34876	M6 Lock Nut, Zinc	4
23	34998	Ground Connector, Bolted for Quick Disconnect	1
24	6100011	Nipple, 3/4" NPT X 2"	1
25	34867	Grounding Wire, Turbine to Motor to Deck	1
26	3180600	Motor Support Plate, DS1	1
27	251602	NEMA 9 Mount Bracket, DS1-EX1000-1150-1220	1
28	34818	M6X30 Carriage Bolt	2
29	34819	M6 Fender Washer	2
30	3481701	M6x25 Allen Head Screw	1
31	25067	M6 Flat Washer	1

UNLESS OTHERWISE SPECIFIED:	
DIMENSIONS ARE IN INCHES	DATE: 4/29/09
FRAC/DIM: 1/16"	DRAWN: D.J.S.
ANGULAR MATCH: 30°/END: 45°	CHECKED:
TWO PLACE DECIMAL ± .05	ENG APPR:
THREE PLACE DECIMAL ± .030	MFG APPR:
O.A.	
COMMENTS:	
BREAK SHARP EDGES	
MATERIAL:	
FINISH:	
NEXT ASSY:	
USED ON:	
APPLICATION:	

THE INFORMATION CONTAINED ON THIS DRAWING IS THE PROPERTY OF RUWAC. ANY REPRODUCTION IN PART OR AS A WHOLE WITHOUT THE WRITTEN PERMISSION OF RUWAC IS PROHIBITED.

TITLE: **54 Winter St**  
**Ruwac** Holyoke, MA 01040  
**MOTOR DECK ASSEMBLY**  
**DS1-EX1000**  
**BALDOR MOTOR**

SIZE: DWG. NO. **B** 000 E 0231 US  
 SCALE: 1:4 WEIGHT:  SHEET 1 OF 1



Ruwac Industrial Vacuums  
 54 Winter Street  
 Holyoke, MA 01040

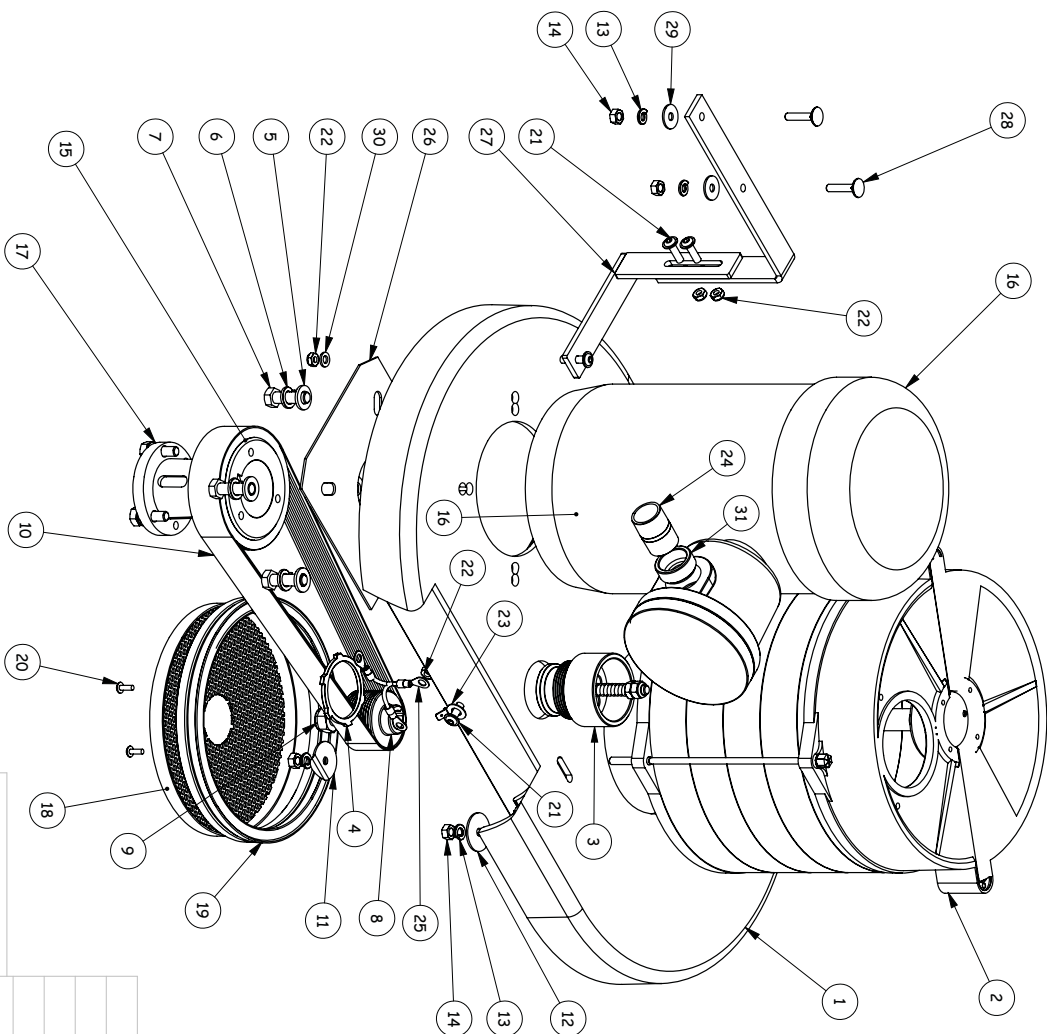
Tel: (413) 532-4030  
 Fax: (413) 532-4039  
 www.ruwac.com

ISO 9001  
 REGISTERED





REVISIONS		
REV.	DESCRIPTION	DATE



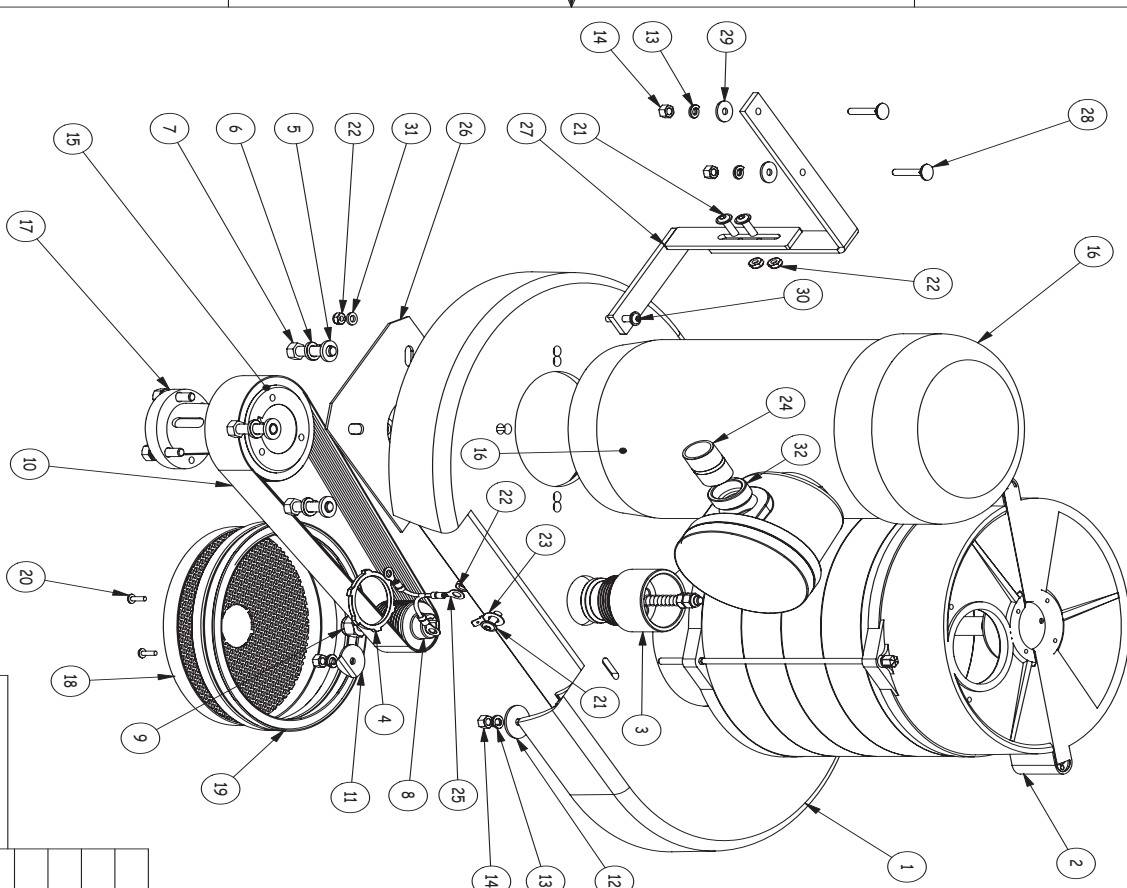
ITEM NO.	PART NUMBER	DESCRIPTION	QTY.
1	32838	Motor Deck, D51, Black	1
2	22220	Turbine,NTB 55/6,5/48, 2.2 KW	1
3	9696008	Relief Valve, 1.5" Adjustable	1
4	34928	Lock Nut, 1 1/2"	1
5	37507	Flat Washer, 3/8"	4
6	37501	Split Lock Washer, 3/8"	4
7	37505	3/8-16 x 1 1/4" Bolt, Hex Cop	4
8	33057	Pulley, Poly-V, 10 Groove, .48mm Dia	1
9	32827	M12 Nyloc Nut, Left Handed	1
10	35013	Belt, 310 T, 10 Groove, Poly-V	1
11	20031	Fender Washer, 1/4"x1 1/4", Zinc, Bent	2
12	20031	Fender Washer, 1/4"x1 1/4", Zinc	1
13	20039	M6 Split Lock Washer, Zinc	5
14	20040	Hex Nut, M6, Zinc	5
15	33063	Sheave, 100mm, 10 Groove	1
16	250126-EX	Motor, 1.5hp, .115/230 Volt, .1ph, Gas-Explosion Proof	1
17	33053	Bushing, P1, 5/8", US Style	1
18	99953	Screen Protector, Turbine	1
19	31333	Gasket, Self Gripping, 11x21mm, EPDM	1
20	32869	M5x12 Button Head Screw	2
21	34817	M6x20 Allen Head Screw	3
22	34876	M6 Lock Nut, Zinc	4
23	34998	Ground Connector, Bolted for Quick Disconnect	1
24	6100010	Nipple, 3/4" NPT Close	1
25	34867	Grounding Wire, Turbine to Motor to Deck	1
26	3180600	Motor Support Plate, D51	1
27	251602	NEMA 9 MOUNT BRACKET	1
28	34818	M6x30 Carriage Bolt	2
29	34819	M6 Fender Washer	2
30	25067	M6 Flat Washer	1
31	316526	Reducing Bushing, 1" x 3/4"	1
32	3481701	M6x25 Allen Head Screw	1

**PROPRIETARY AND CONFIDENTIAL**

UNLESS OTHERWISE SPECIFIED:		DATE	NAME
DIMENSIONS ARE IN INCHES		4/29/09	D.J.S.
TOLERANCES:			
FRACTIONAL 1/16		CHECKED	
ANGULAR .00015 X .000250		BNG APPR.	
TYPICAL .0005		MFG APPR.	
THREE PLACE DECIMAL ± .000			
BREAK SHARP EDGES			
MATERIAL		G.A.	
FINISH		COMMENTS:	
NEW ASSY			
USED ON			
APPLICATION			

SIZE	DWG. NO.		
<b>B</b>	000 E 0305 US		
SCALE: 1:4	WEIGHT:	S	

REVISIONS			
REV.	DESCRIPTION	DATE	NAME



ITEM NO.	PART NUMBER	DESCRIPTION	QTY.
1	32838	Motor Deck, DS1, Black	1
2	22220	Turbine, NTB 55/6.5/48, 2.2 KW	1
3	9696008	Relief Valve, 15" Adjustable	1
4	34928	Lock Nut, 1 1/2"	1
5	37507	Flat Washer, 3/8"	4
6	37501	Split Lock Washer, 3/8"	4
7	37505	3/8-16 x 1 1/4" Bolt, Hex Cap	4
8	33057	Pulley, Poly-V, 10 Groove, 48mm Dia	1
9	32827	M12 Nylon Nut, Left Handed	1
10	35013	Belt, 310 J, 10 Groove, Poly-V	1
11	20031	Fender Washer, 1/4" x 1 1/4", Zinc, Bent	2
12	20031	Fender Washer, 1/4" x 1 1/4", Zinc	1
13	20039	M6 Split Lock Washer, Zinc	5
14	20040	Hex Nut, M6, Zinc	5
15	33063	Sheave, 100mm, 10 Groove	1
16	250126-EX	Motor, 1.5hp., 115/230 Volt, 1ph, Gas-Explosion Proof	1
17	33053	Bushing, P1 5/8", US Style	1
18	99953	Screen Protector, Turbine	1
19	31333	Gasket, Self Gripping, 11x21mm, EPDM	1
20	32869	M5x12 Button Head Screw	2
21	34817	M6x20 Allen Head Screw	3
22	34876	M6 Lock Nut, Zinc	4
23	34998	Ground Connector, Bolted for Quick Disconnect	1
24	610010	Nipple, 3/4" NPT Close	1
25	34867	Grounding Wire, Turbine to Motor to Deck	1
26	3180600	Motor Support Plate, DS1	1
27	251602	NEMA 9 Mount Bracket, DS1-EX1000-1150-1220	1
28	34818	M6x30 Carriage Bolt	2
29	34819	M6 Fender Washer	2
30	3481701	M6x25 Allen Head Screw	1
31	25067	M6 Flat Washer	1
32	316526	Reducing Bushing, 1" x 3/4"	1

UNLESS OTHERWISE SPECIFIED:			
DIMENSIONS ARE IN INCHES	DRAWN	DATE	NAME
TOLERANCES	4/29/09	D.J.S.	
FRACTIONAL ± 1/16"	CHECKED		
ANGULAR MATCH ± 0.010°	ENG APPR.		
TWO PLACE DECIMAL ± .005	MFG APPR.		
THREE PLACE DECIMAL ± .001	QA		
BREAK SHARP EDGES	COMMENTS		
MATERIAL			
FINISH			
APPLICATION			
USED ON			
NEXT ASSY			

THE INFORMATION CONTAINED IN THIS DRAWING IS THE PROPERTY OF RUWAC. ANY REPRODUCTION IN PART OR AS A WHOLE WITHOUT THE WRITTEN PERMISSION OF RUWAC IS PROHIBITED.

PROPRIETARY AND CONFIDENTIAL			
SIZE	DWG. NO.	REV	
B	000 E 0232 US		
SCALE: 1/4"	WEIGHT:	SHEET 1 OF 1	

TITLE:  
**Ruwac** 54 Winter St.  
 Holyoke, MA 01040  
**MOTOR DECK ASSEMBLY**  
 DS1-EX1000  
 LEESEON MOTOR



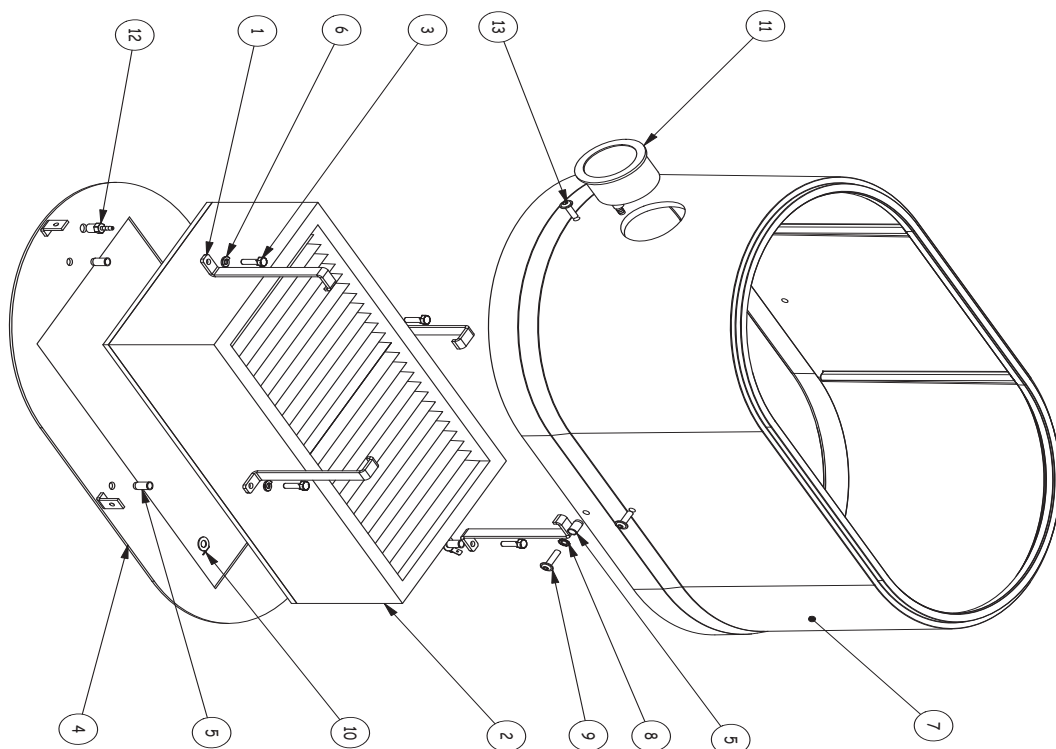
Ruwac Industrial Vacuums  
 54 Winter Street  
 Holyoke, MA 01040  
 Tel: (413) 532-4030  
 Fax: (413) 532-4039  
 www.ruwac.com

ISO 9001  
 REGISTERED





REVISIONS			
REV.	DESCRIPTION	DATE	NAME



ITEM NO.	PART NUMBER	DESCRIPTION	QTY.
1	34949	Hepa Hold Down Bracket	4
2	35211	Hepa Filter, 40 sq/ft, DOP Tested, Double Side Screens	1
3	32903	M6x20 Hex Cap Screw, Zinc	4
4	34947	Hepa Mounting Plate	1
5	34817A	M6 Blind Pin	6
6	20039	M6 Split Lock Washer, Zinc	4
7	32835	Large Housing Spacer, Black	1
8	25000	1/4" External Star Washer	2
9	3481701	M6x25 Allen Head Screw	2
10	34998	Ground Connector, Bolted For Quick Disconnect	2
11	25143	Minihelic	1
12	25149	Hose Barb, 1/8"X1/8", Straight, Brass	1
13	34817	M6x20 Allen Head Screw	4

DIMENSIONS ARE IN INCHES  
 TOLERANCES:  
 FRACTIONAL ±1/16"  
 ANGULAR MATCH ±0.1°  
 TWO PLACE DECIMAL ±.05  
 THREE PLACE DECIMAL ±.010  
 UNLESS OTHERWISE SPECIFIED:  
 FINISH: BZP  
 MATERIAL: 304 SS  
 BREAK SHARP EDGES  
 COMMENTS:

SIZE DWG. NO. REV  
 B 000 E 0220 US  
 SCALE: 1:5 WEIGHT: SHEET 1 OF 1

PROPRIETARY AND CONFIDENTIAL  
 THE INFORMATION CONTAINED IN THIS DRAWING IS THE PROPERTY OF RUWAC. ANY REPRODUCTION IN PART OR AS A WHOLE WITHOUT THE WRITTEN PERMISSION OF RUWAC IS PROHIBITED.



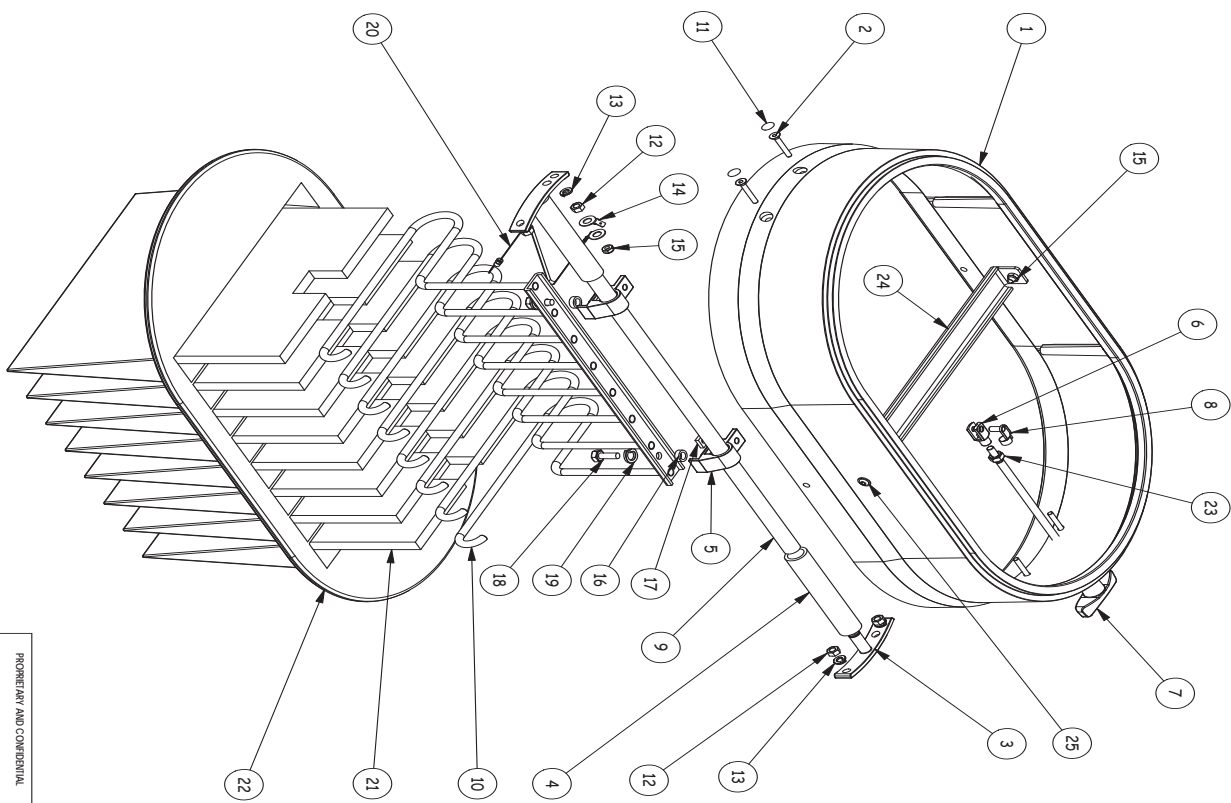
Ruwac Industrial Vacuums  
 54 Winter Street  
 Holyoke, MA 01040

Tel: (413) 532-4030  
 Fax: (413) 532-4039  
 www.ruwac.com

ISO 9001  
 REGISTERED



REVISIONS			
REV.	DESCRIPTION	DATE	NAME
A	E.C.O. # 669	4/29/09	D.J.S.



ITEM NO.	PART NUMBER	DESCRIPTION	QTY.
1	32834	Housing Spacer, Small, Black	1
2	34815	M6x30 Socket Cap Screw	4
3	34806	Shaker Rod Mounting Support	2
4	34805	Clear Hose, 3/4" I.D.	2
5	34802	Filter Slide	2
6	25047	Steel Yoke End Filter Shaker	1
7	22565	Shaker Bar with Swivel Handle	1
8	34879	Spring Clip, 6x12	1
9	348045S	Slide Bar, Stainless Steel	1
10	25056	Filter Cage, 1.2m	1
11	34871	Plastic Plug, 4.5/13	4
12	20040	M6 Hex Nut, Zinc	4
13	20039	M6 Split Lock Washer, Zinc	4
14	34998	Ground Connector, Bolted for Quick Disconnect	2
15	34876	M6 Lock Nut, Zinc	3
16	200656	Spacer, Filter Cage	2
17	20045	M8 Hex Nut, Four Corner, Zinc	2
18	25038	M8x20 Hex Cap, Zinc	2
19	20050	M8 Split Lock Washer, Zinc	2
20	34868	Ground Filter to Deflector, 1.2m	1
21	20091F	Filter Insert, 1.2m	8
22	20093	Filter, 1.2m, 13 sq/ft, Static Conductive	1
23	20044	M8 Hex Nut, Zinc	1
24	30095	Filter Bar Support, D1 Series	1
25	34817	M6-1x20 Allen Head Screw	2

UNLESS OTHERWISE SPECIFIED:			
DIMENSIONS ARE IN INCHES	DATE	NAME	
TOLERANCES	3/12/09	D.J.S.	
FRACTIONAL ± 1/16"	DRAWN		
ANGULAR MATCH ± 0.1°	CHECKED		
TWO PLACE DECIMAL ± 0.05	ENG APPR.		
THREE PLACE DECIMAL ± 0.01	MFG APPR.		
BREAK SHARP EDGES	Q.A.		
MATERIAL	COMMENTS		
FINISH			
USED ON			
APPLICATION			

THE INFORMATION CONTAINED ON THIS DRAWING IS THE PROPERTY OF RUWAC. ANY REPRODUCTION IN PART OR AS A WHOLE WITHOUT THE WRITTEN PERMISSION OF RUWAC IS PROHIBITED.			
PROHIBITARY AND CONFIDENTIAL			
SIZE	DWG. NO.	REV	
B	000 E 0217 US	A	
SCALE: 1:5	WEIGHT:	SHEET 1 OF 1	

**54 WINTER ST.**  
**Holyoke, MA 01040**  
**RUWAC**  
**FILTER ASSEMBLY**  
**FOR 1.2m FILTER**  
**DJ1-EX**

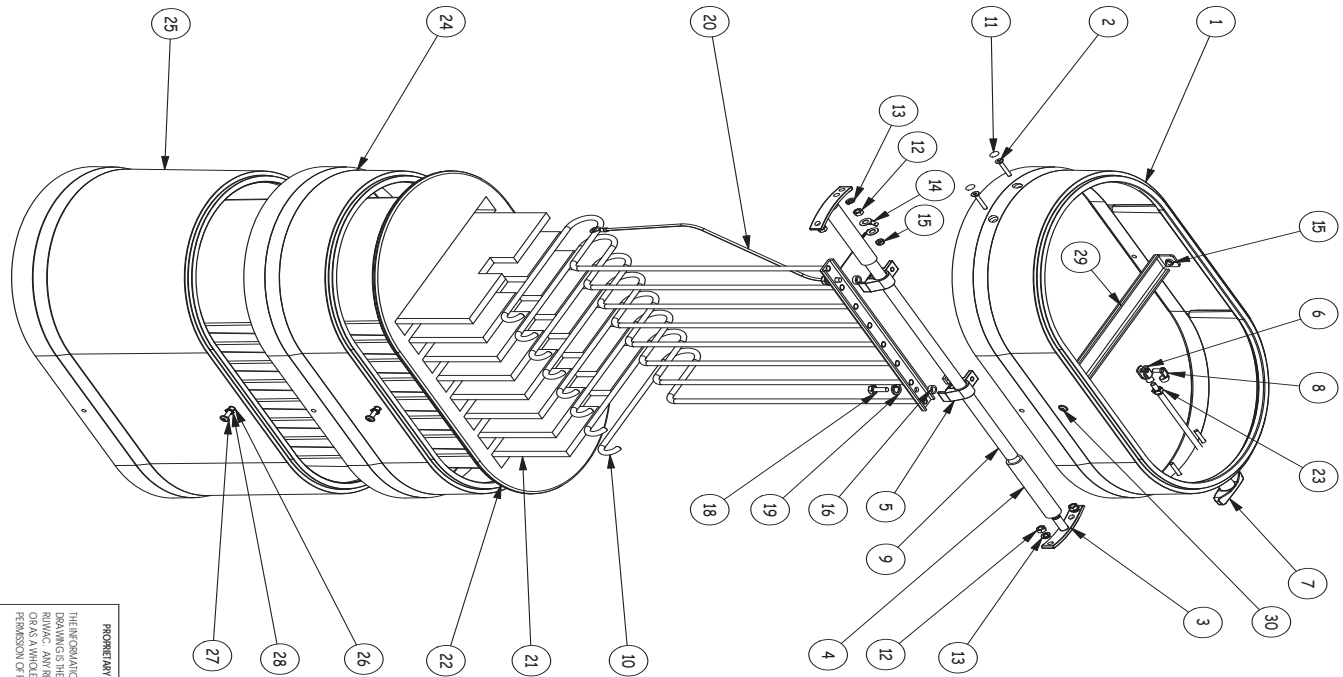


Ruwac Industrial Vacuums  
54 Winter Street  
Holyoke, MA 01040

Tel: (413) 532-4030  
Fax: (413) 532-4039  
www.ruwac.com

ISO 9001  
REGISTERED





PROPRIETARY AND CONFIDENTIAL  
THE INFORMATION CONTAINED IN THIS DRAWING IS THE PROPERTY OF RUWAC. ANY REPRODUCTION IN PART OR AS A WHOLE WITHOUT THE WRITTEN PERMISSION OF RUWAC IS PROHIBITED.

ITEM NO.	PART NUMBER	DESCRIPTION	QTY.
1	32834	Housing Spacer, Small, Black	1
2	34815	M6x30 Socket Cap Screw	4
3	34806	Shaker Rod Mounting Support	2
4	34805	Clean Hose, 3/4" I.D.	2
5	34802	Filter Slide	2
6	25047	Steel Yoke End, Filter Shaker	1
7	22565	Shaker Bar with Swivel Handle	1
8	34879	Spring Clip, 6x12	1
9	34804S5	Slide Bar, Stainless Steel	1
10	34807	Filter Shaker Insert, 2.6m	1
11	34871	Plastic Plug, 4.5/13	4
12	20040	M6 Hex Nut, Zinc	4
13	20039	M6 Split Lock Washer, Zinc	4
14	34998	Ground Connector, Bolted for Quick Disconnect	2
15	34876	M6 Lock Nut, Zinc	3
16	200656	Spacer, Filter Cage	2
17	20045	M8 Hex Nut, Four Corner, Zinc	2
18	25038	M8x20 Hex Cap, Zinc	2
19	20050	M8 Split Lock Washer, Zinc	2
20	34869	Ground, Filter to Deflector, 2.6m	1
21	30091F	Filter Insert, 2.6m	8
22	30093	Filter, 2.6m, Static Conductive	1
23	20044	M8 Hex Nut, Zinc	1
24	32834	Housing Spacer, Small, Black	1
25	32835	Large Housing Spacer, Black	1
26	34817A	M6 Blind Pen	4
27	3481701	M6x25 Allen Head Screw	4
28	25000	1/4" External Star Washer	4
29	30095	Filter Bar Support, DI Series	1
30	34817	M6x20 Allen Head Screw	2

UNLESS OTHERWISE SPECIFIED:		DATE	NAME
DIMENSIONS ARE IN INCHES		3/12/09	D.J.S.
TOLERANCES			
FRACTIONAL ± 1/16"		CHECKED	
ANGULAR MATCH ± 0.1°		ENG. APPR.	
HOLE PLACE DECIMAL ± 0.05		MAN. APPR.	
HOLE PLACE DECIMAL ± 0.00		QA	
BREAK SHARP EDGES		COMMENTS	
MATERIAL		--	
FINISH		--	
NEXT ASSY		USED ON	
APPLICATION			

SIZE		DWG. NO.	REV
B		000 E 0218 US	A
SCALE: 1:1		WEIGHT:	SHEET 1 OF 1

TITLE:		54 WINTER ST.	
FILTER ASSEMBLY FOR 2.6m FILTER		HOLYOKE, MA 01040	
DSI-EX			



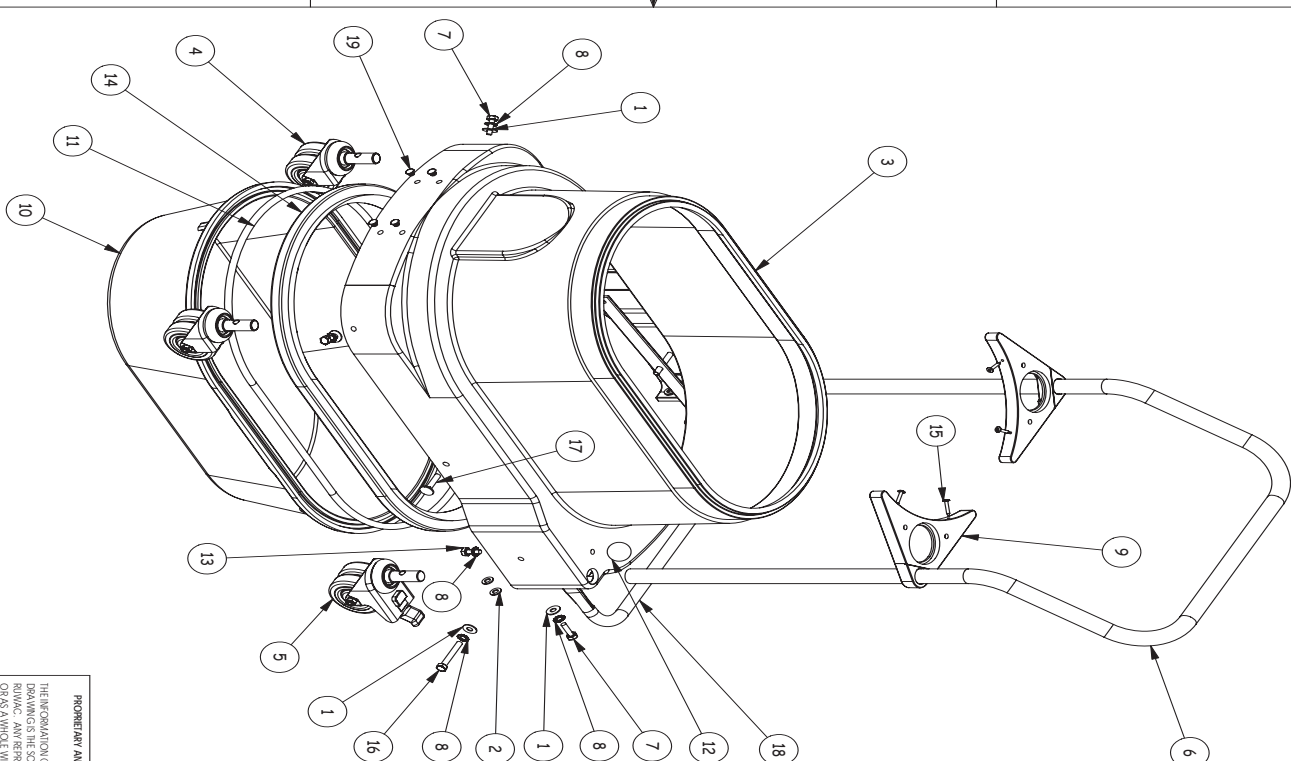
Ruwac Industrial Vacuums  
54 Winter Street  
Holyoke, MA 01040

Tel: (413) 532-4030  
Fax: (413) 532-4039  
www.ruwac.com

ISO 9001  
REGISTERED



REVISIONS			
REV.	DESCRIPTION	DATE	NAME
A	E.C.O. # 683	6/11/09	D.J.S.



ITEM NO.	PART NO.	DESCRIPTION	QTY.
1	34882	M8 Thin Flat Washer, 8.4x20x1.3	8
2	25061	M8 Flat Washer	4
3	34808	Series 1 Base, Black	1
4	25117	Caster, Swivel, 75mm, Anti-static	2
5	251180	Caster, Fixed, 75mm, Anti-Static	2
6	25080	Push Handle, D1 W2	1
7	25054	M8x25 Hex Bolt, Zinc	4
8	25037	M8 External Washer, Zinc	7
9	32039	Handle Support, Plastic	2
10	32837	Dust Pan, 35 L/ter	1
11	2509865	Gasket, Round, 10mm Dia. x 68.5" Long	1
12	25060	Knob, Black, 8mm	1
13	25038	M8x20 Hex Cap, Zinc	1
14	20070	Gasket, Dust Pan/Lower Housing, Profile	1
15	32988	#8-1 Phillips Truss Head, Zinc	4
16	34811	M8x55 Hex Head Bolt	2
17	25053	Carriage Bolt, M8x35	2
18	200104	Dust Pan Lever Assembly	1
19	22120	Plug, 8mm, Black	4

UNLESS OTHERWISE SPECIFIED:			
DIMENSIONS ARE IN INCHES			
TOLERANCES			
FRACTIONAL ±1/16"			
ANGULAR MATCH ±30°			
TWO PLACE DECIMAL ±.05			
THREE PLACE DECIMAL ±.030			
BREAK SHARP EDGES			
MATERIAL			
FINISH			
APPLICATION			
NEXT ASSY			
USED ON			
FINISH			
APPLICATION			
NEXT ASSY			
USED ON			
FINISH			
APPLICATION			

**54 Winter St.**  
**Holyoke, Ma. 01040**  
**DS1-EX BASE ASM,**  
**DS1-EX 1000-1220**

PROPRIETARY AND CONFIDENTIAL			
THE INFORMATION CONTAINED HEREIN IS THE PROPERTY OF RUWAC. ANY REPRODUCTION IN PART OR AS A WHOLE WITHOUT THE WRITTEN PERMISSION OF RUWAC IS PROHIBITED.			
UNLESS OTHERWISE SPECIFIED:			
DIMENSIONS ARE IN INCHES			
TOLERANCES			
FRACTIONAL ±1/16"			
ANGULAR MATCH ±30°			
TWO PLACE DECIMAL ±.05			
THREE PLACE DECIMAL ±.030			
BREAK SHARP EDGES			
MATERIAL			
FINISH			
APPLICATION			
NEXT ASSY			
USED ON			
FINISH			
APPLICATION			
NEXT ASSY			
USED ON			
FINISH			
APPLICATION			

**DS1-EX BASE ASM,**  
**DS1-EX 1000-1220**



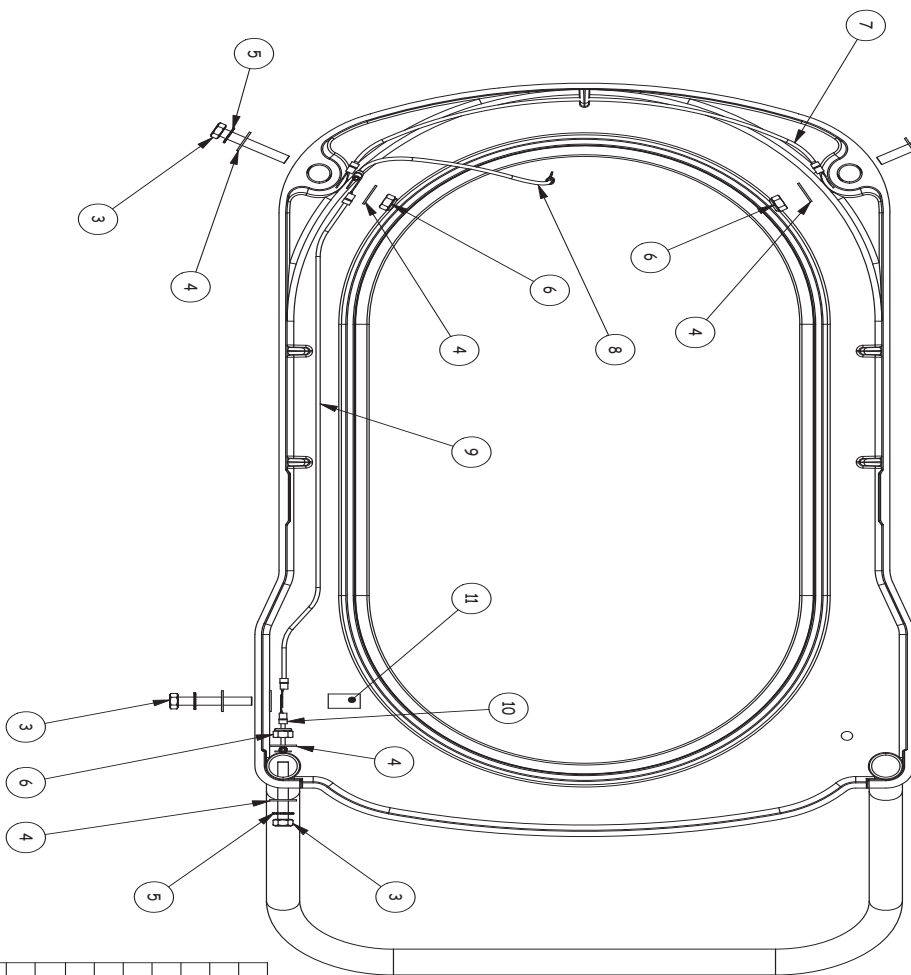
Ruwac Industrial Vacuums  
 54 Winter Street  
 Holyoke, MA 01040

Tel: (413) 532-4030  
 Fax: (413) 532-4039  
 www.ruwac.com

ISO 9001  
 REGISTERED



REVISIONS			
REV	DESCRIPTION	DATE	NAME
A	E.C.O. # 689, GROUND WIRE PRT # 5 ADDED 6/23/09 D.J.S.		



ITEM NO.	PART #	DESCRIPTION	QTY.
1	34808	Series 1 Base, Black	1
2	25080	Push Handle, D1W2	1
3	34811	M8x55 Hex Head Bolt	4
4	34882	M8 Thin Flat Washer, 8.4x20x1.3	8
5	25037	M8 External Washer, Zinc	4
6	30029	M8 Lock Nut, Zinc	3
7	34861	Ground Wire, Front Caster, DSI-EX	1
8	34875	Ground Wire, Inlet to Front Caster, DSI-EX	1
9	34863	Ground Wire, Caster to Foot Lever, DSI-EX	1
10	34860	Ground Wire, Foot Lever to Handle, DSI-EX	1
11	34812	PVC Spacer 15/16" Long	1

UNLESS OTHERWISE SPECIFIED:			
DIMENSIONS ARE IN INCHES	DRAWN	DATE	NAME
TOLERANCES:			
FRACTIONS: ± .015"	CHECKED	2/6/09	D.J.S.
DECIMALS: ± .005"	ENG APPR		
ANGLES: ± .01°	MFG APPR		
TWO PLACE DECIMAL: ± .005	G.A.		
THREE PLACE DECIMAL: ± .000			
BREAK SHARP EDGES	COMMENTS		
MATERIAL			
FINISH			
USED ON			
APPLICATION			

**54 Winter St**  
**Ruwac** Holyoke, MA 01040  
**BASE GROUND ASM**  
**DSI SERIES EX**

SIZE DWG. NO. REV  
**B** 000 E 0215 US **A**  
 SCALE: 1/4" = 1" WEIGHT: SHEET 1 OF 1

PROPRIETARY AND CONFIDENTIAL  
 THE INFORMATION CONTAINED IN THIS DRAWING IS THE SOLE PROPERTY OF RUWAC. ANY REPRODUCTION IN PART OR IN WHOLE WITHOUT THE WRITTEN PERMISSION OF RUWAC IS PROHIBITED.



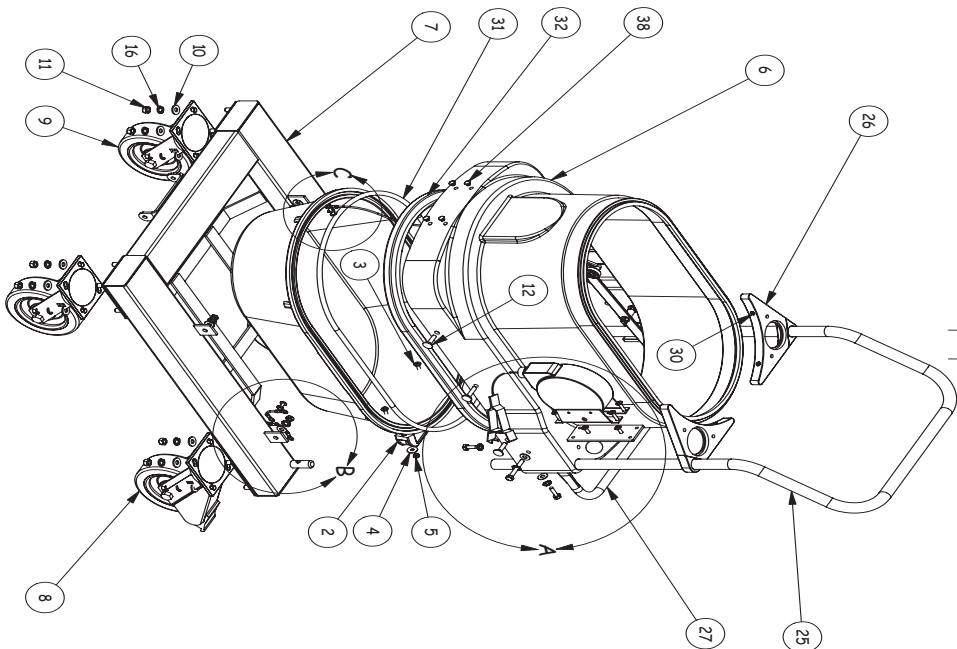
Ruwac Industrial Vacuums  
 54 Winter Street  
 Holyoke, MA 01040

Tel: (413) 532-4030  
 Fax: (413) 532-4039  
 www.ruwac.com

ISO 9001  
 REGISTERED



REVISIONS			DATE	NAME
REV	DESCRIPTION			
A	E.C.O. # 634, CHANGED GROUND WIRES		3/12/09	D.J.S.
B	E.C.O. # 662		6/22/09	D.J.S.



ITEM NO.	PART #	DESCRIPTION	QTY.
1	32837	Dust Pan, .35 Liter, Black	1
2	21658-28	Handle, Black	1
3	21464	M6x30 Allen Head Screw	2
4	34819	M6 Fender Washer	2
5	34876	M6 Lock Nut, Zinc	2
6	32836	Lower Housing, Black	1
7	3021204	Caster Frame, Series 1	1
8	30211	Caster, Rigid with Brake, 6"	2
9	30210	Caster Swivel, 6"	2
10	31205	Flat Washer, 5/16", Zinc	16
11	37502	Hex Nut, 3/8"	16
12	25030	Carriage Bolt, M8x30	4
13	20044	M8 Hex Nut, Zinc	4
14	20050	M8 Split Lock Washer, Zinc	4
15	25061	M8 Flat Washer, Zinc	4
16	37501	Split Lock Washer, 3/8"	16
17	34859	Caster Frame Ground to Inlet, for EX Machines	1
18	34817	M6x20 Allen Head Screw	2
19	25000	1/4" External Star Washer	2
20	34860	Ground Wire, Footlever-Handle Bar/Footlever-Frame	2
21	25054	M8x25 Hex Bolt, Zinc	2
22	25037	M8 External Washer, Zinc	5
23	34882	M8 Thin Flat Washer, 8.4x20x1.3	4
24	31805	M1x40 Reinforcement Caster Peg	2
25	25080	Push Handle, D1W2	1
26	32039	Handle Support, Plastic	2
27	200104	Dust Pan Lever Assembly, DS1	1
28	34811	M8x55 Hex Head Bolt	2
29	25053	Carriage Bolt, M8x35	2
30	32988	#8-1 Phillips Truss Head, Zinc	4
31	2509865	Gasket, Round, 10mm Dia. x 68.5" Long	1
32	20070	Gasket, Dust Pan/Lower Housing, Profile	1
33	25060	Knob, Black, 8mm	1
34	25038	M8x20 Hex Cap, Zinc	1
35	34878P	Grounding Reel Mounting Plate	1
36	3481701	M6x25 Allen Head Screw	6
37	34878	Grounding Reel, Static Control, Automatic Spring Rewind	1
38	22120	Plug, 8mm, Black	4

54 Winter St.  
Ruwac  
Holyoke, Ma. 01040

TITLE:

DS1-EX 1400 BASE ASM

UNLESS OTHERWISE SPECIFIED:		DATE	NAME
DRAWN	1/14/09	D.J.S.	
CHECKED			
ANGULAR MATCHES TO 30°			
TWO PLACE DECIMAL ± .05			
THREE PLACE DECIMAL ± .010			
QA			
COMMENTS			
BREAK SHARP EDGES			
MATERIAL	--		
FINISH	--		
APPLICATION			

THE INFORMATION CONTAINED ON THIS DRAWING IS THE PROPERTY OF RUWAC. ANY REPRODUCTION IN PART OR AS A WHOLE WITHOUT THE WRITTEN PERMISSION OF RUWAC IS PROHIBITED.

PROHIBITED AND CONFIDENTIAL

SIZE DWG. NO. REV

B 000 E 0214 US B

SCALE: 1:10 WEIGHT: SHEET 1 OF 2



Ruwac Industrial Vacuums  
54 Winter Street  
Holyoke, MA 01040

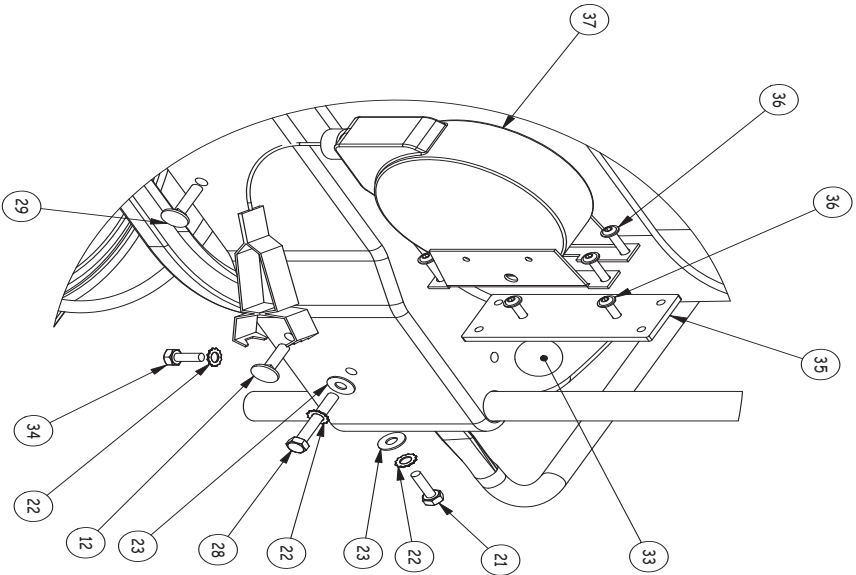
Tel: (413) 532-4030  
Fax: (413) 532-4039  
www.ruwac.com

ISO 9001  
REGISTERED

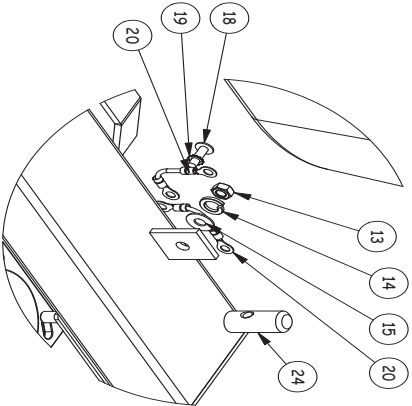




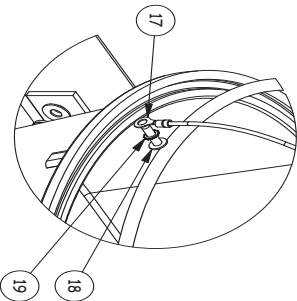
REVISIONS			
REV	DESCRIPTION	DATE	NAME
A	E.C.O. # 634, CHANGED GROUND WIRES	3/12/09	D.J.S.
B	E.C.O. # 662	6/22/09	D.J.S.



DETAIL A  
SCALE 2 : 7



DETAIL B  
SCALE 2 : 7



DETAIL C  
SCALE 2 : 7

UNLESS OTHERWISE SPECIFIED		DATE		NAME	
DIMENSIONS ARE IN INCHES		1/14/09		D.J.S.	
TOLERANCES		DRAWN		CHECKED	
FRACTIONAL ± 1/16"					
ANGULAR MACHINE ± 0.5°					
HOLE ± 0.010					
THREE PLACE DECIMAL ± 0.00					
BREAK SHARP EDGES		O.A.			
MATERIAL					
FINISH					
NEXT ASSY		USED ON			
APPLICATION					
PROPRIETARY AND CONFIDENTIAL		THE INFORMATION CONTAINED IN THIS DRAWING IS THE PROPERTY OF RUWAC. IT IS TO BE USED FOR THE SPECIFIC APPLICATION AND NO OTHER REPRODUCTION IN PART OR AS WHOLE WITHOUT THE WRITTEN PERMISSION OF RUWAC IS PROHIBITED.			
SIZE		DRAWING NO.		REV	
B		000 E 0214 US		B	
SCALE: 2:1		HEIGHT:		SHEET 2 OF 2	
TITLE:		54 Winter St.			
		Ruwac Holyoke, MA 01040			
		DS1-EX 1400 BASE ASM			



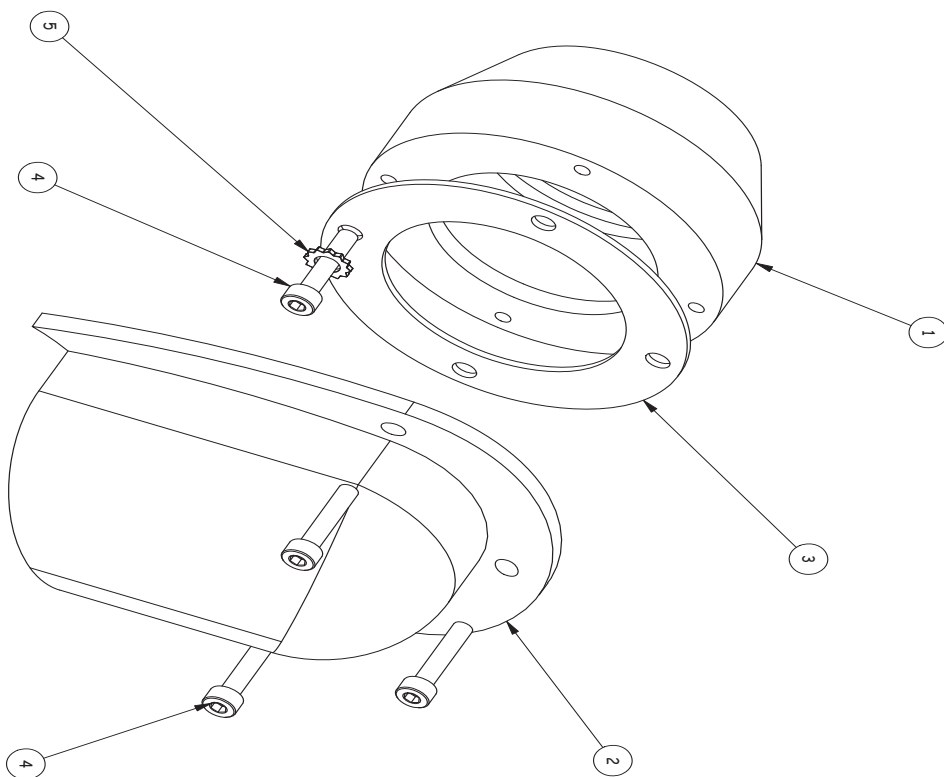
Ruwac Industrial Vacuums  
54 Winter Street  
Holyoke, MA 01040

Tel: (413) 532-4030  
Fax: (413) 532-4039  
www.ruwac.com

ISO 9001  
REGISTERED



REVISIONS			
REV.	DESCRIPTION	DATE	NAME
B	E.C.O. # 453	12/6/06	D.J.S.
C	E.C.O. # 688	6/22/09	D.J.S.



ITEM NO.	PART #	DESCRIPTION	QTY.
1	20006	Inlet, 50mm, Aluminum	1
2	20061	Deflector, 50mm, Bronze, DS1/W5	1
3	34870	Inlet Gasket, 50mm	1
4	25057	M4x20 Socket Cap Screw	4
5	32867	M5 Ext Tooth Lock Washer, Zinc	1

UNLESS OTHERWISE SPECIFIED:			
DIMENSIONS ARE IN INCHES			
TOLERANCES			
FRACTIONAL ± 1/16"			
ANGULAR MATCH ± 30°			
TWO PLACE DECIMAL ± .05			
THREE PLACE DECIMAL ± .030			
BREAK SHARP EDGES			
MATERIAL			
FINISH			
APPLICATION			

PROPERTY AND CONFIDENTIAL			
THE INFORMATION CONTAINED IN THIS DRAWING IS THE PROPERTY OF RUWAC. ANY REPRODUCTION IN PART OR AS A WHOLE WITHOUT THE WRITTEN PERMISSION OF RUWAC IS PROHIBITED.			
PH20006A6E		50mm EX INLET ASSEMBLY	
SIZE		REV	
DWG. NO.		C	
B		000 E 0111 US	
SCALE: 1:1		SHEET 1 OF 1	



Ruwac Industrial Vacuums  
54 Winter Street  
Holyoke, MA 01040

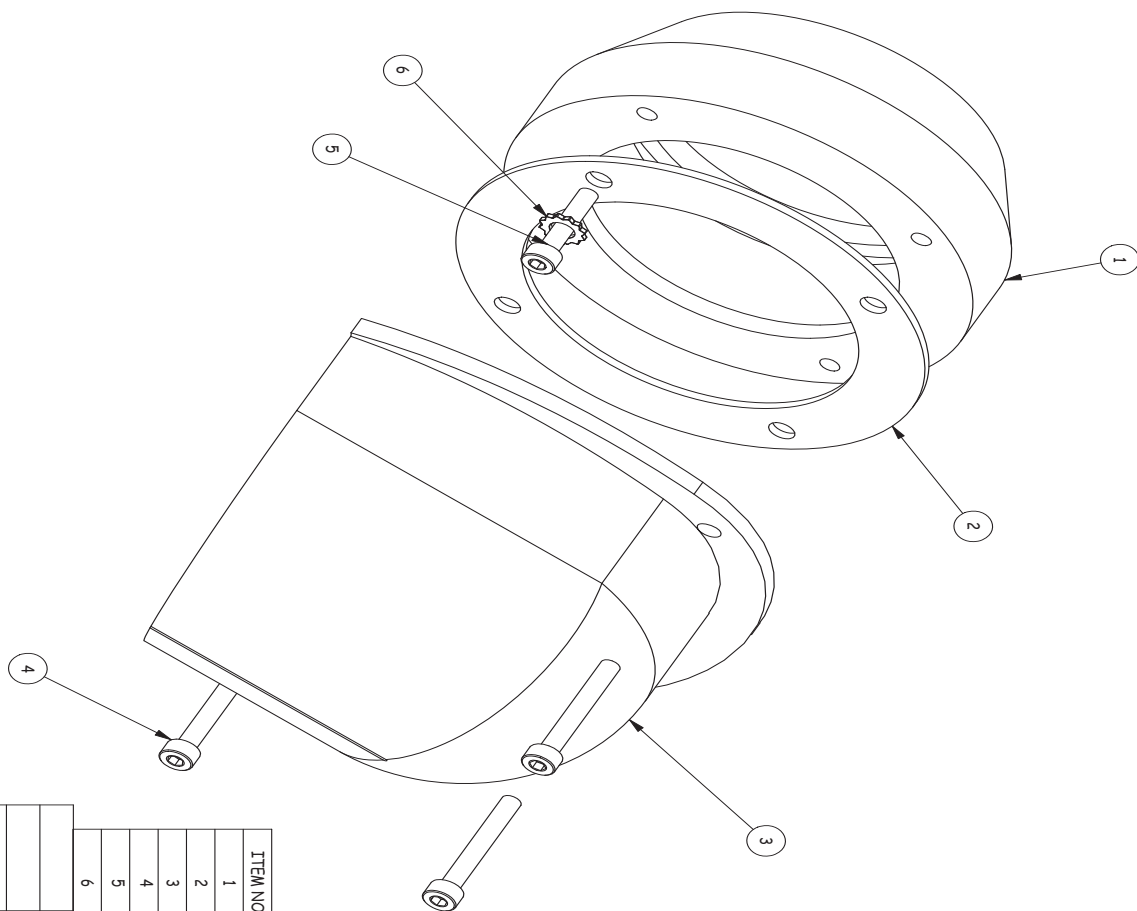
Tel: (413) 532-4030  
Fax: (413) 532-4039  
www.ruwac.com

ISO 9001  
REGISTERED





REVISIONS			
REV.	DESCRIPTION	DATE	NAME
C	E.C.O. # 635	3/13/09	D.J.S.
D	E.C.O. # 687	6/22/09	D.J.S.



ITEM NO.	PART #	DESCRIPTION	QTY.
1	30007	Inlet, 70mm, Aluminum	1
2	34821	Gasket, 70mm Inlet	1
3	32963	Deflector, 70mm, Bronze, D51W/S	1
4	32866	M5x30 Socket Head Cap Screw	3
5	32863	M5x20 Socket Head Cap Screw	1
6	32867	M5 Ext Tooth Lock Washer, Zinc	1

UNLESS OTHERWISE SPECIFIED:			
DIMENSIONS ARE IN INCHES			
TOLERANCES			
FRACTIONAL ± 1/16"			
ANGULAR MACH ± 30°			
TWO PLACE DECIMAL ± .05			
THREE PLACE DECIMAL ± .010			
O.A.			
BREAK SHARP EDGES			
MATERIAL			
FINISH			
APPLICATION			

PH30007 AGE			
SIZE	DWG. NO.	REV	
B	000 E 0115 US	D	
SCALE: 1:1	WEIGHT:	SHEET 1 OF 1	

PROPRIETARY AND CONFIDENTIAL

THE INFORMATION CONTAINED IN THIS DRAWING IS THE PROPERTY OF RUWAC. ANY REPRODUCTION IN PART OR AS A WHOLE WITHOUT THE WRITTEN PERMISSION OF RUWAC IS PROHIBITED.



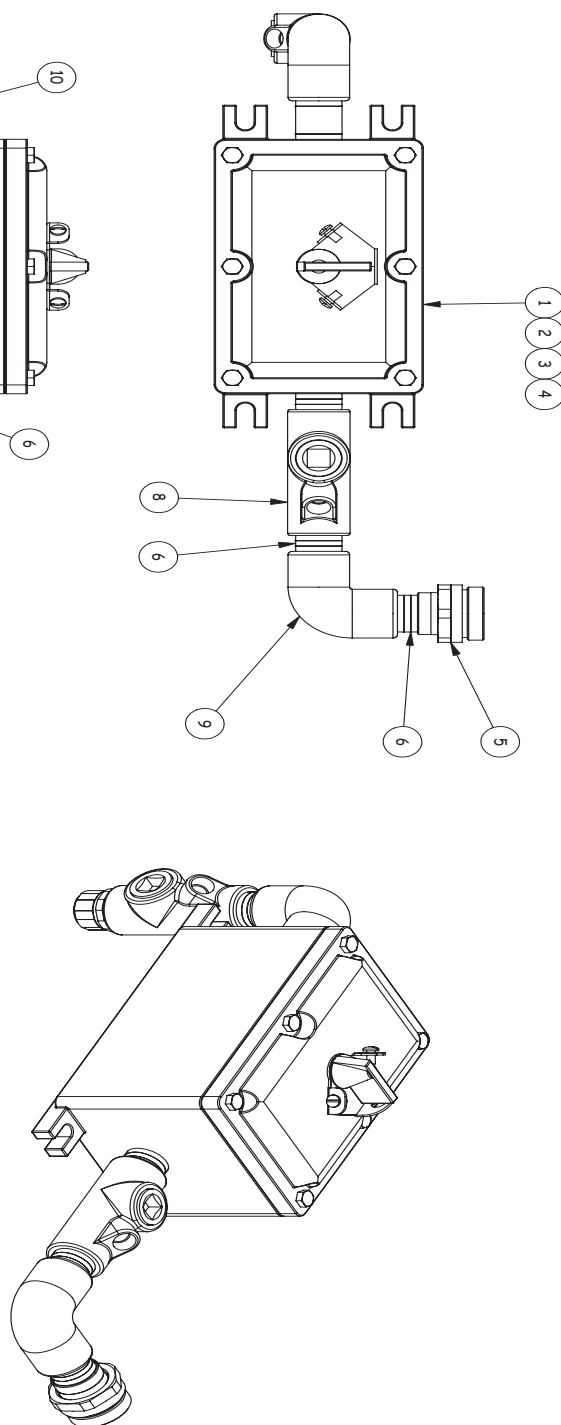
Ruwac Industrial Vacuums  
54 Winter Street  
Holyoke, MA 01040

Tel: (413) 532-4030  
Fax: (413) 532-4039  
www.ruwac.com

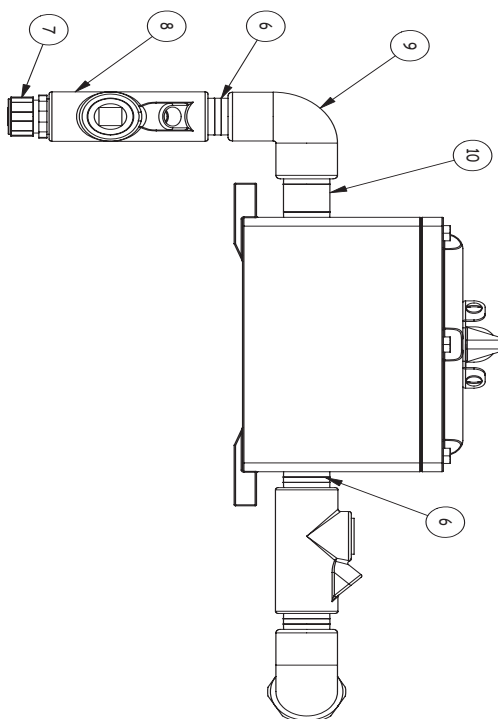
ISO 9001  
REGISTERED



REVISIONS			
REV.	DESCRIPTION	DATE	NAME
C	E.C.O. # 630, BOM REVISED	2/18/09	D.J.S.
D	E.C.O. # 633, BOM REVISED	2/18/09	D.J.S.



ITEM NO.	PART #	DESCRIPTION	QTY.
1	251606-EX	Enclosure, Hazardous Duty, Nema 9, 4-6.3 AMP	1
2	251616-EX	Enclosure, Hazardous Duty, Nema 9, 6.3-10 AMP	1
3	251626-EX	Enclosure, Hazardous Duty, Nema 9, 10-16 AMP	1
4	251636-EX	Enclosure, Hazardous Duty, Nema 9, 16-20 AMP	1
5	UNF75NR-EX	Union, 3/4" Explosion Proof	1
6	6100010	Nipple, 3/4" NPT Close	4
7	349580	Strain Relief, 3/4" NPT	1
8	E/F-75-EX	Conduit Ex-Seal, 3/4" FNPT	2
9	ELF9075-EX	90 Deg. EL, 3/4" NPT, Explosion Proof, Female/Female	2
10	6100011	Nipple, 3/4" NPT X 2"	1



PROPRIETARY AND CONFIDENTIAL

THE INFORMATION CONTAINED IN THIS DOCUMENT IS UNCLASSIFIED EXCEPT WHERE SHOWN OTHERWISE. IT IS THE PROPERTY OF RUWAC. ANY REPRODUCTION IN PART OR AS A WHOLE WITHOUT THE WRITTEN PERMISSION OF RUWAC IS PROHIBITED.

54 WINTER ST.  
HOLYOKE, MA 01040

**RUWAC**  
NEMA 9 ASSEMBLY  
RUWAC

COMMENTS

BREAK SHARP EDGES

MATERIAL

FINISH

USED ON

APPLICATION

CHECKED

DATE

NAME

DRAWN

DATE

NAME

SCALE: 1:3

WEIGHT:

SHEET 1 OF 1



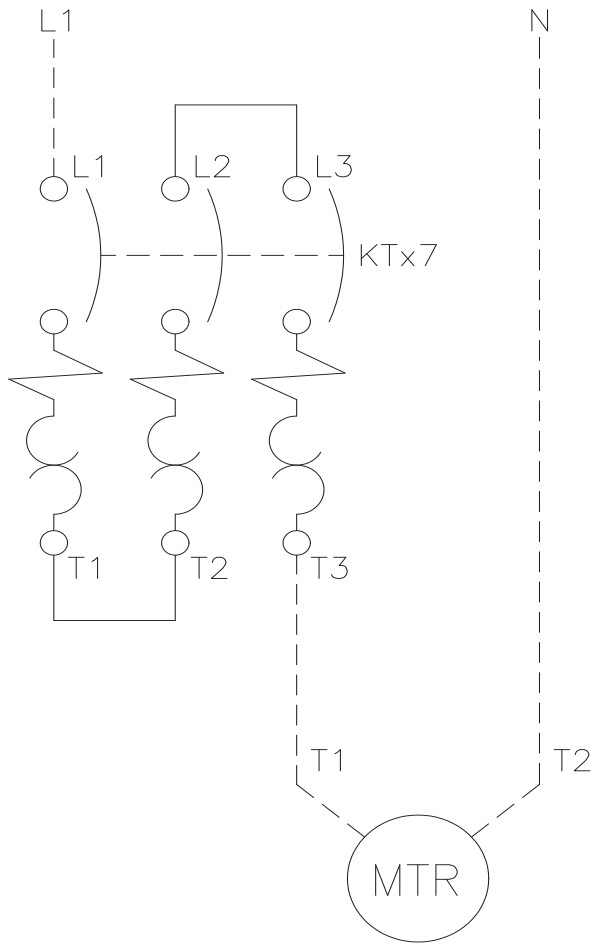
Ruwac Industrial Vacuums  
54 Winter Street  
Holyoke, MA 01040

Tel: (413) 532-4030  
Fax: (413) 532-4039  
www.ruwac.com

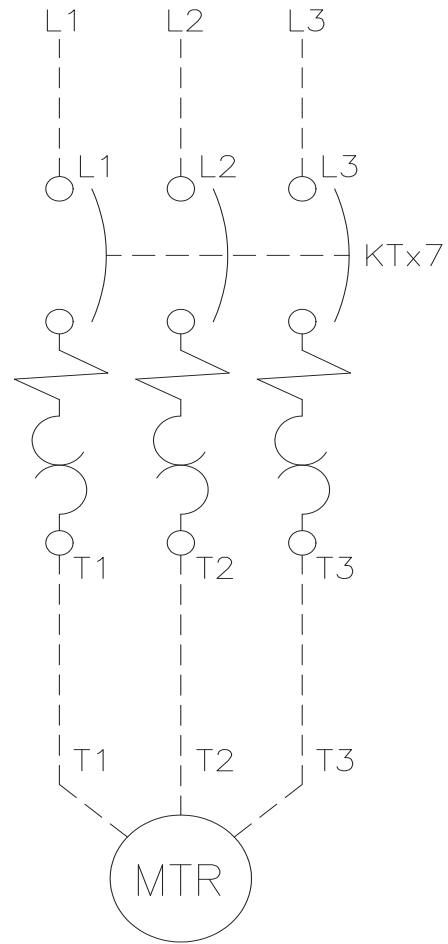
ISO 9001  
REGISTERED




NOTICE: THIS DOCUMENT IS THE PROPERTY OF RUWAC U.S.A. NEITHER THIS DOCUMENT NOR ANY DATA OR INFORMATION HEREIN SHALL BE COPIED OR REPRODUCED IN ANY MANNER, LOANED OR OTHERWISE DISPOSED OF, OR USED FOR ANY PURPOSE WHATSOEVER WITHOUT THE PRIOR WRITTEN PERMISSION OF RUWAC U.S.A. IF THIS DOCUMENT IS LOANED BY OR WITH THE AUTHORITY OF RUWAC U.S.A., THE BORROWER, IN CONSIDERATION OF SUCH LOAN, AGREES TO THE FOREGOING CONDITIONS AND TO RETURN THIS DOCUMENT UPON REQUEST OR UPON COMPLETION OF THE SPECIFICALLY AUTHORIZED WORK IT WAS ISSUED.



SINGLE PHASE



THREE PHASE

		Tolerances Unless Otherwise Specified Break Sharp Edges  Two Place Decimals +/- .03 Three Place Decimals +/- .010 Per ANSI Y14.5	 54 Winter Street Holyoke, MA 01040, USA			
			CONNECTION DIAGRAM SINGLE AND THREE PHASE			
			BIN:	SIZE A	MAG FILE	DWG NO.  000 K 0041 US
CHECKED	DATE		DATE: 12/2/08	SCALE	NONE	D.W.N. D.J.S. SHEET 01 OF 01



---

Notes:



Ruwac Industrial Vacuums  
54 Winter Street  
Holyoke, MA 01040

Tel: (413) 532-4030  
Fax: (413) 532-4039  
[www.ruwac.com](http://www.ruwac.com)

ISO 9001  
REGISTERED



# TERMS & CONDITIONS

**ACCEPTANCE:** The terms and conditions of sale set forth herein apply to any order accepted or acknowledged by RUWAC, Inc. Buyer's acceptance of RUWAC'S proposal or delivery of all or any part of the goods covered hereunder constitutes acceptance of the terms and conditions of sale contained herein, and RUWAC hereby rejects any additions to or modification to these terms and conditions. Any representations, promises, warranties, or statements by RUWAC or its agents that differ in anyway from these terms and conditions shall be given no force or effect. No contract is final until accepted in writing by RUWAC at its corporate office in Holyoke, Massachusetts.

**PRICES:** Prices quoted orally expire the same day they are made unless accepted in writing on that day or confirmed by written communication by RUWAC. Written price quotations are guaranteed for thirty (30) days after the date issued, but may be terminated by written notice within that period. After thirty (30) days, any written price quotations are subject to adjustment to reflect prices in effect at the time of shipment, including any changes in packing, storage, or shipping charges. This order or proposal includes only the equipment specified herein, and does not include freight or installation of RUWAC equipment. All prices are F.O.B. RUWAC'S plant in Holyoke, Massachusetts and are exclusive of all taxes, levies, and duties that may be assessed in connection with the sale or delivery of goods, and Buyer shall be responsible for all such taxes, levies, and duties. In the event RUWAC pays any such tax, levy, or duty, Buyer shall promptly reimburse RUWAC therefore. Any packaging requirements other than RUWAC'S standard packaging and commercial container will be invoiced as an extra charge.

**PAYMENT:** Payment is due in full thirty (30) days after the date of invoice. All invoices paid after the due date will be assessed a late payment charge of one and half percent (1.5%) per month or any portion thereof, or the maximum amount allowed by applicable law, whichever is less. Buyer shall be responsible for all costs of collection, including reasonable legal fees. Sales on the foregoing terms are subject to the approval of RUWAC'S credit department and may be changed at any time at RUWAC'S sole discretion. If RUWAC has reasonable grounds with respect to Buyer's ability or willingness to make timely payments for the goods, RUWAC may at any time suspend performance, decline to ship, or require advance payment in cash or other adequate assurance satisfactory to RUWAC.

**SHIPMENTS AND DELIVERY:** RUWAC shall use its reasonable efforts to meet all shipment or delivery dates recited in RUWAC'S proposal or in Buyer's order but any such dates are estimated only and are not guaranteed. RUWAC shall have no liability to Buyer for damages or penalties, direct or indirect, for any delay in shipment or delivery, whether such delay is minor or substantial, nor shall Buyer have the right to declare a breach of contract because of any such delay. In any event, delivery schedules are based upon the effective date of the order and are subject to prompt receipt by RUWAC of all necessary down payments, information and instructions from Buyer, including any required approval of drawings. RUWAC shall have the right to make partial shipments, and invoiced covering the same shall be payment terms hereof. RUWAC will attempt to ship in accordance with Buyer's instructions, but RUWAC will make the final selection of a method of shipment and a carrier unless Buyer clearly and conspicuously specifies that shipment must be by a particular method of carrier. RUWAC is not responsible for damage or loss in transit, and all such claims must be by Buyer directly against the carrier.

**CHANGE ORDERS:** RUWAC shall not be obligated to make any changes in or additions to the scope of the work which are initiated by Buyer or result from circumstances beyond RUWAC'S control unless there is an equitable adjustment in price and or delivery.

**CANCELLATION, SUSPENSION OR DELAY:** In the event Buyer requests or causes a cancellation, suspension or delay in any RUWAC'S work under this proposal or order based thereon, Buyer shall indemnify and pay to RUWAC all appropriate charges, including but not limited to any costs, expenses, and commitments incurred by RUWAC up to the date of receipt of notice of such cancellation, suspension or delay, plus RUWAC'S overhead and reasonable profit. If shipment is delayed on account of Buyer, the purchase price shall be due and payable as if delivery had been made. Additionally, all charges related to storage, disposition and/or resumption of work, at RUWAC'S plant or elsewhere, shall be for Buyer's sole account and Buyer thereto shall assume all risks incidental.

**CLAIMS: NOTICE OF DEFECTS:** Buyer shall give written notice of rejection of any shipment or portion thereof within thirty (30) days after the date of shipment specifying the reasons therefore. Failure to give such notice shall be deemed a waiver of any right of rejection and any claim with respect thereto (except as to claims under the warranty) and shall be deemed an acceptance of such shipment. Buyer shall set aside and hold rejected goods without further processing until RUWAC has an opportunity to inspect and advise of the disposition, if any, to be made of such goods. In no event shall any rejected goods be returned reworked, or scrapped by Buyer without the express written authorization of RUWAC.

**INSPECTION OF EQUIPMENT:** RUWAC shall have the right to inspect, after prior notices, the equipment supplied by it when in operation. If Buyer requires, RUWAC shall execute an appropriate secrecy agreement.

**CONFIDENTIALITY:** All proposals, drawings, diagrams, specification, pricing, and other materials relating to the goods included are the property and confidential information of RUWAC. Buyer shall not disclose such material or information without the written approval of RUWAC.

**BACK CHARGE:** RUWAC will pay claims for expenses of Buyer relating to labor and/or material supplied by Buyer only if (a) RUWAC is advise in writing before such expenses are incurred (2) RUWAC gives Buyer its prior written consent to the supply of such labor and/or material by buyer.



**LIMITED WARRANTY:** RUWAC warrants that new equipment which are complete units and are sold and/or manufactured by RUWAC, Inc. will be free from defects in material and workmanship for a period of 18 months from date of shipment or 12 months from date of start-up, whichever comes first. RUWAC warrants that replacement parts sold hereunder will be free from defects in material and workmanship for a period of 120-days after the date of shipment. RUWAC machines that have been completely re-built at the factory will carry a 180-day warranty from date of shipment. All field repairs by authorized RUWAC service personnel are covered by a 120-day parts only warranty. RUWAC, Inc. will not assume any responsibility under the terms of this limited warranty on equipment, which have not been paid for in full. This warranty does not apply to any equipment that has been disassembled, repaired, or otherwise altered by any person without the written authorization of RUWAC'S service department, nor does it apply to any product that has been subject to failure due to corrosive or abrasive attack, misused, damaged, or improperly installed, nor does it apply to motors, controls, and components not manufactured by RUWAC, Inc. Motors, controls, and other Sub vendor's components therefore are warranted only to the extent of the manufacturer's warranty. All warranty work on such products must be authorized by RUWAC, Inc. and must be performed in an authorized shop as designated by the manufacturer. RUWAC sole liability and buyer's sole and exclusive remedy hereunder is the replacement or repair at RUWAC'S option of products not complying with this warranty. Such repair or replacement shall be F.O.B. RUWAC'S factory, and RUWAC reserves the right to invoice all expenses incurred when repairs are made in the field at the request of the customer, except as specifically set forth herein, RUWAC makes no warranty express or implied, with respect to the products and/or service supplied hereunder, this warranty is in lieu of and excludes all other warranties, including without limitation, any warranty of merchantability, fitness for a particular purpose, or conformance to purchaser's specifications.

**LIMITATION OF LIABILITY:** RUWAC'S responsibility with respect to the goods and RUWAC'S obligations related thereto should in no event exceed the purchase price of the goods. RUWAC shall not be liable to Buyer for any special incidental, indirect, or punitive damages for any reason whatsoever, including, but without limitation damages in the form of (a) loss of profits, revenues, or anticipated savings resulting from the failure of the equipment to meet specifications or warranties (b) damages suffered by Buyer as a result of loss of production facilities or equipment (c) cost of replacement equipment (d) damages suffered by customers of the Buyer (e) any fines or penalties assessed for failure to comply with any law or government regulations.

**REPAIR OF GOODS EXPOSED TO HAZARDOUS, TOXIC, OR INFECTIOUS MATERIAL:** Buyer shall ensure that any goods submitted by Buyer or any of its customers to RUWAC for repairs or other service have been decontaminated and cleaned (including sterilization, if appropriate) of any hazardous, toxic or infectious materials, including without limitation any materials listed by the Environmental Protection Agency, OSHA, or any applicable state law as deserving or requiring special treatment. Upon RUWAC'S request, Buyer or its customer shall certify in writing that such goods contain no such hazardous, toxic, or infectious materials, and that such decontamination has taken place in accordance with accepted parties and in accordance with all applicable laws and regulations. If special safety equipment is required to protect RUWAC'S service personnel from any such hazardous, toxic, or infectious materials during field service work or otherwise. Buyer shall ensure that such safety equipment is provided and that the personnel are properly instructed. The provision of this paragraph shall apply to all work to be performed by RUWAC'S service personnel at any time, whether or not covered by warranty. Buyer shall defend and indemnify RUWAC for any and all losses, liabilities, expenses, and damages (including attorneys' fees) arising out of any failure of buyer or its customer to comply fully with the terms of this paragraph.

**BUYER SUPPLIED DATA:** Buyer acknowledges that RUWAC has relied upon all specifications and other data supplied by Buyer to RUWAC in the selection and design of the equipment and the preparation of this proposal. In the event the site operating conditions differ from those represented by Buyer and relied upon by RUWAC, any warranties or performance guarantees contained herein affected by such conditions shall be null and void, unless otherwise mutually agreed upon in writing.

**REMEDIES OF SELLER:** In addition to any other remedies of RUWAC provided hereby or by law, in the event Buyer becomes bankrupt, insolvent, assigns assets for the benefit of creditors or its financial condition has substantially deteriorated, RUWAC may, at its sole option, declare a breach of contract, stop all work hereunder or demand payments in advance as security for its performance hereunder.

**FACTIONS: GOVERNING LAW:** Any dispute, controversy, or claim against RUWAC with respect to the goods or any of RUWAC'S obligations related thereto must be commenced within one year from the date of shipment. All contract between Buyer and RUWAC shall be governed by and construed in accordance with the laws of the state of Massachusetts except that body of laws controlling conflict of laws.

**BONDS:** In addition to the price specified herein, Buyer shall pay the cost of any bonds, which Buyer requires RUWAC to obtain.

**ENTIRE AGREEMENT:** These terms and conditions, together with the provisions of the proposal constitute the entire agreement between the parties pertaining to the goods, and they supersede any prior or contemporaneous agreements, representations, or understandings between the parties. No waiver or modification of these terms and conditions is binding unless such waiver or modification is set out in writing signed by an authorized manager or officer of RUWAC. RUWAC'S failure to strictly enforce any right on one occasion does not constitute a waiver of that or any on any other occasion.

